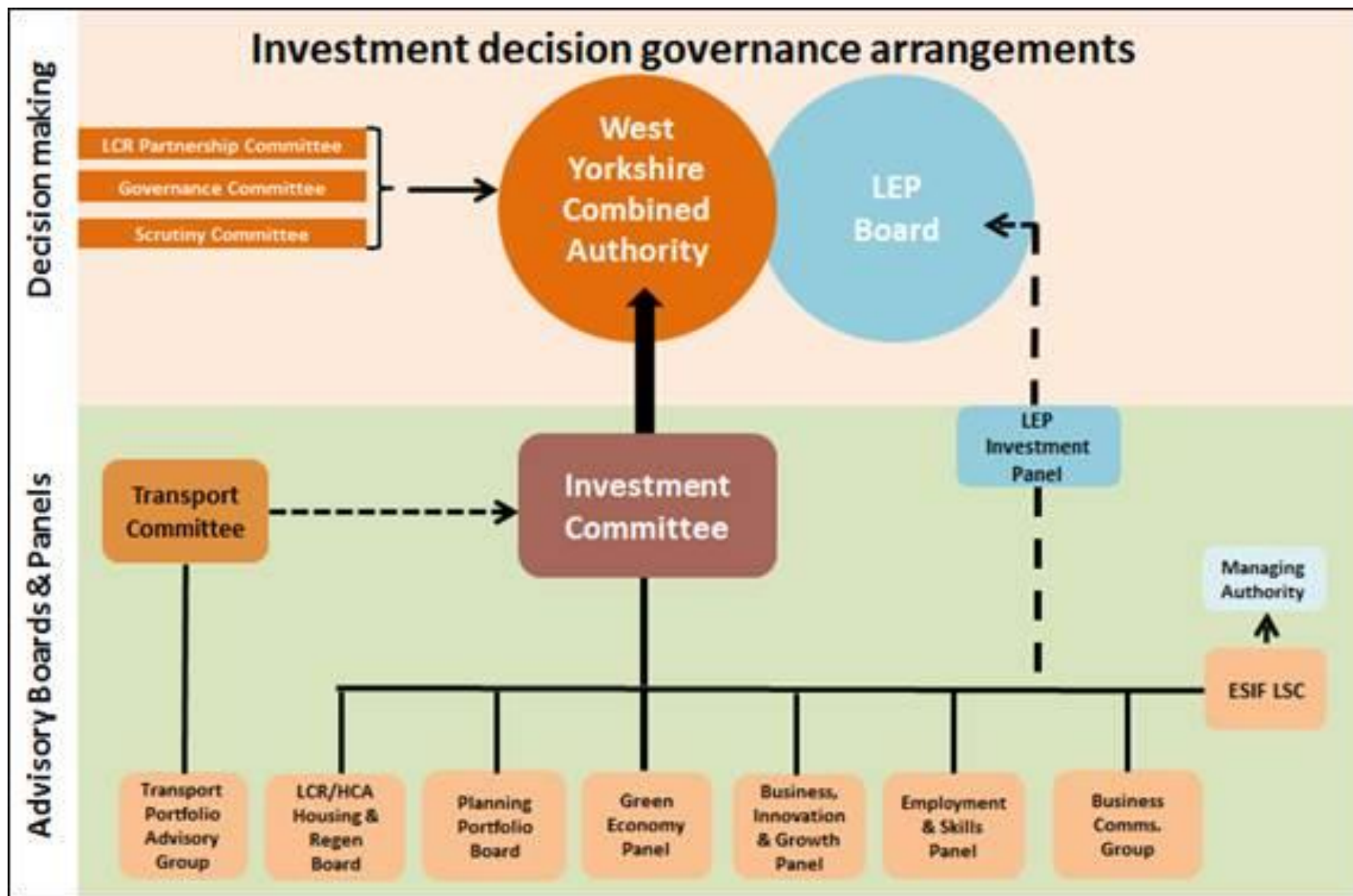
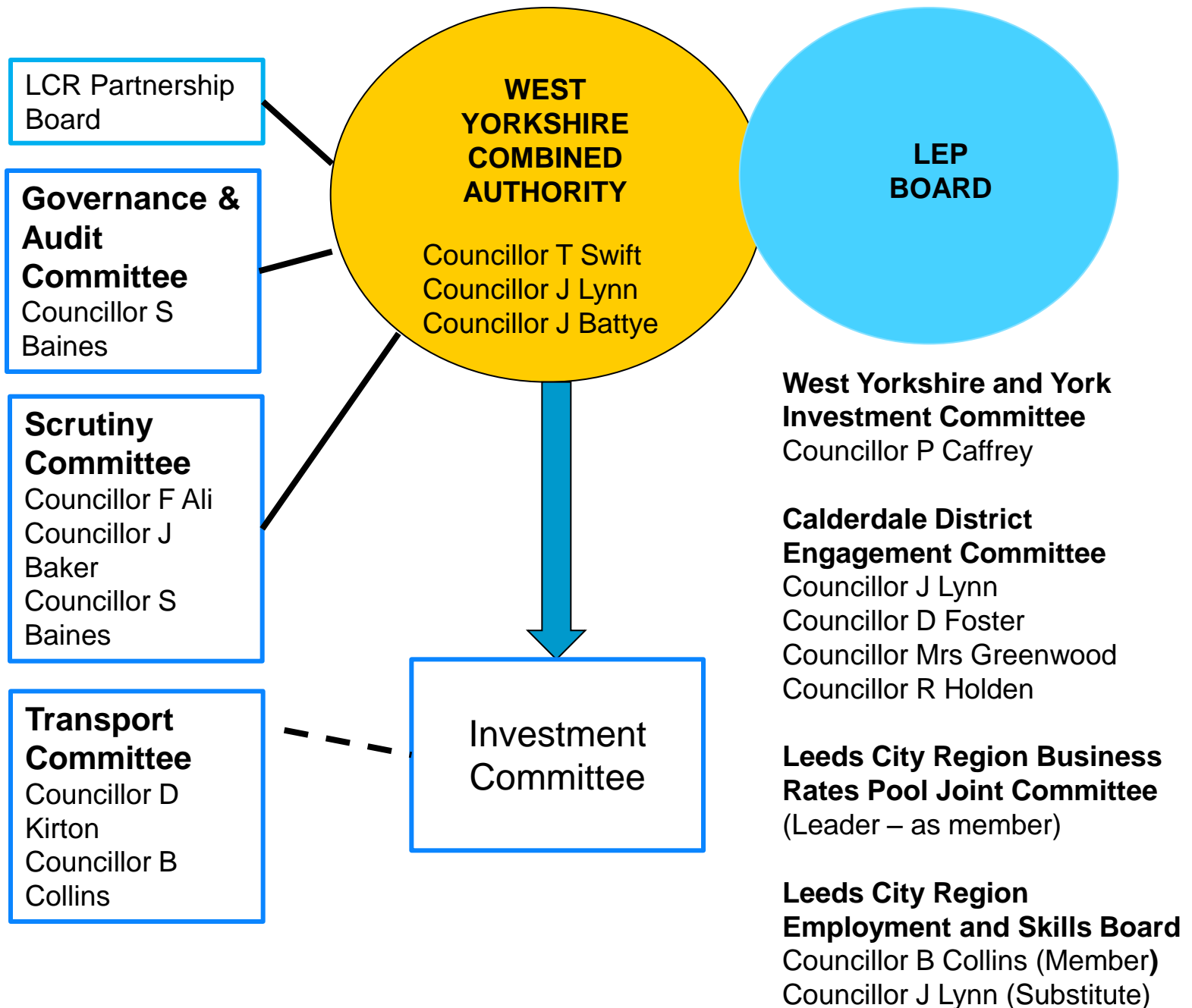


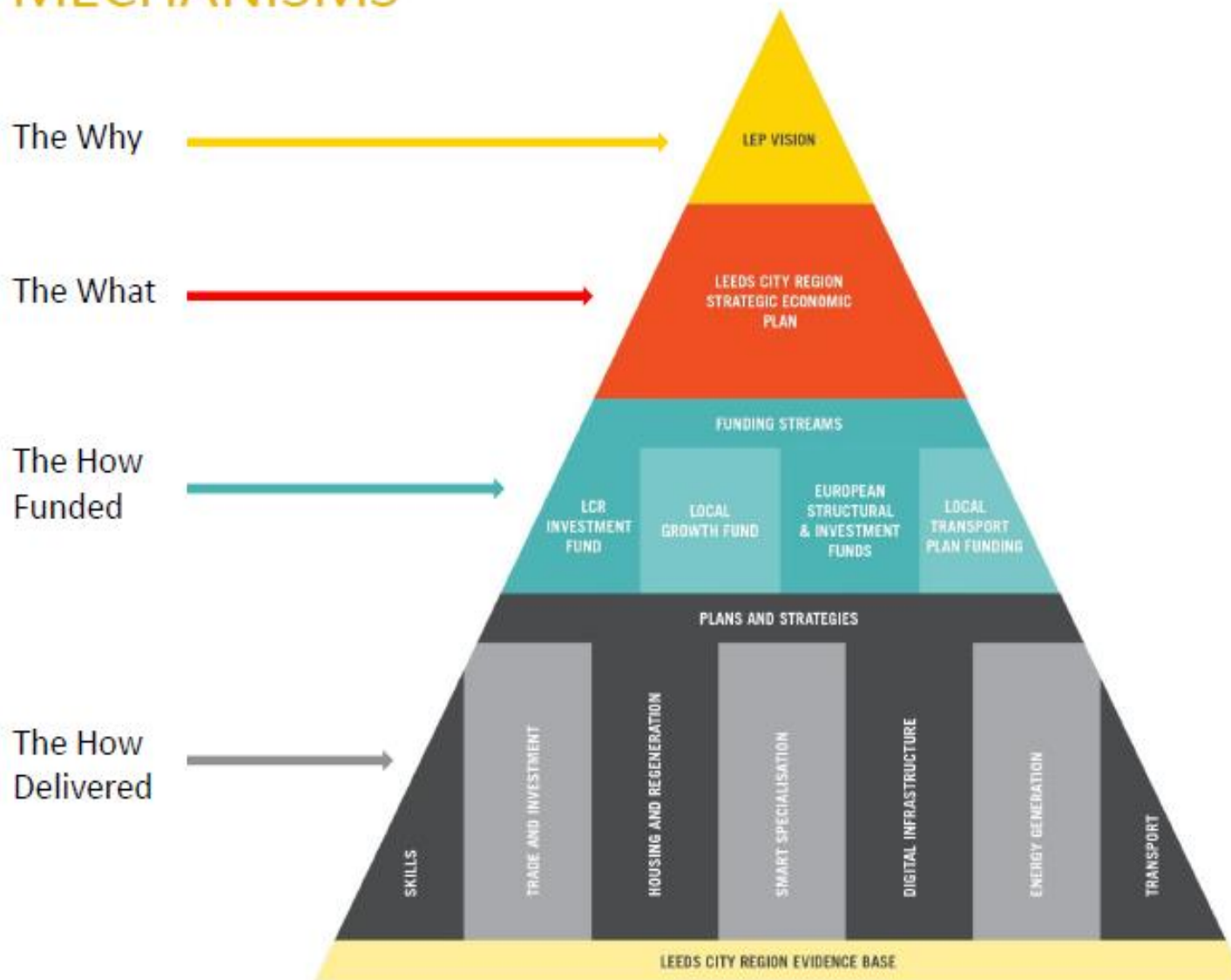
Understanding the City Region

Thursday 5th March 2015

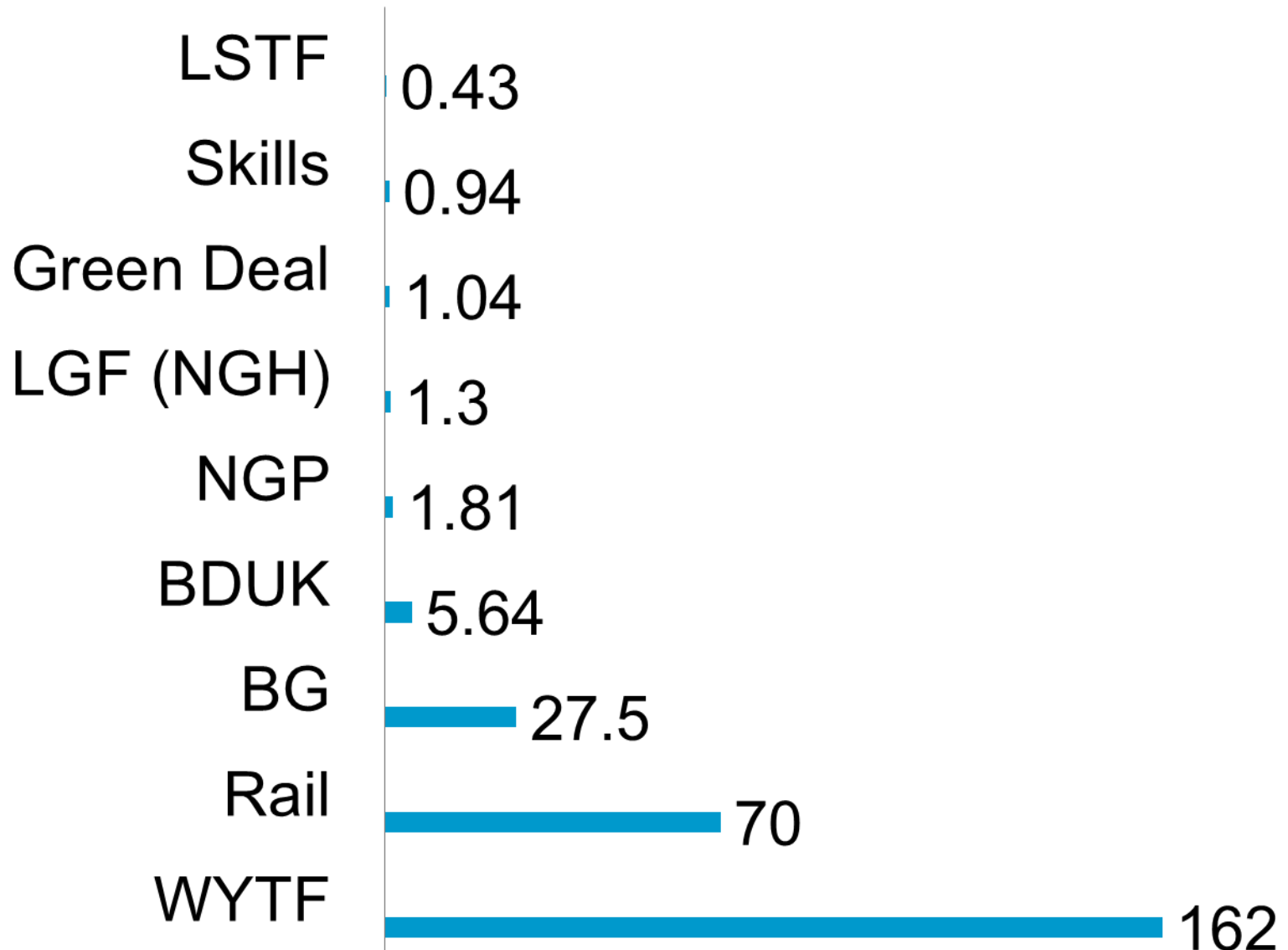




STRATEGIES AND FUNDING MECHANISMS



Benefits to Calderdale £M



West Yorkshire + Transport Fund

- Formalised through Local Growth Deal.
- Worth £1bn+ over 20yrs.
- Evidence of successful delivery in Years 1-5 required for release of subsequent years' funding.

15% of the
fund Vs 8%
of the
population

£150m
GVA pa

2000
Jobs

Calderdale Schemes

- A629 Halifax to Huddersfield Improvements (£120m)
- A641 Bradford to Huddersfield Corridor (£75m)
- Halifax Station Gateway (£5m)

Cross-boundary Schemes

- Calder Valley Line
- M62 J24a
- Rail Package (car parking)
- Bus Package and UTMC

Employment and Skills

- Apprenticeship Hubs helped create 1135 apprenticeships
- Head Start programme helped 355 young people aged 18 – 24 into employment
- Devolved youth contract has reduced NEET from 28,000 to 11,000
- Employer ownership pilot securing £17.5m for SME's to upskill.
- Better informed choices project delivered fact sheets and video clips about careers across key growth sectors
- Audit of schools on Enterprise activity to shape future resources.

Business Development and Investment

- LCR prioritises 6 sectors, Financial & Professional Services, Health & Life Sciences, Manufacturing, Creative & Digital, Food & Drink, Low Carbon.
- Business capital projects are focussed on 6 innovation centres. None of these are in Calderdale (nearest is Bradford).
- Inward Investment was subcontracted to Leeds & Partners but is coming in house to the Combined Authority.
- The current LCR Capital Grant scheme is to continue. 40 Calderdale companies have benefited to date (£1.76m).
- Calderdale Council are considering bidding with other LAs for a Business Enterprise Programme, partly ESIF funded.
- A new LCR Growth Hub launches in April 2015. Calderdale has been offered 50% funding for one officer post.

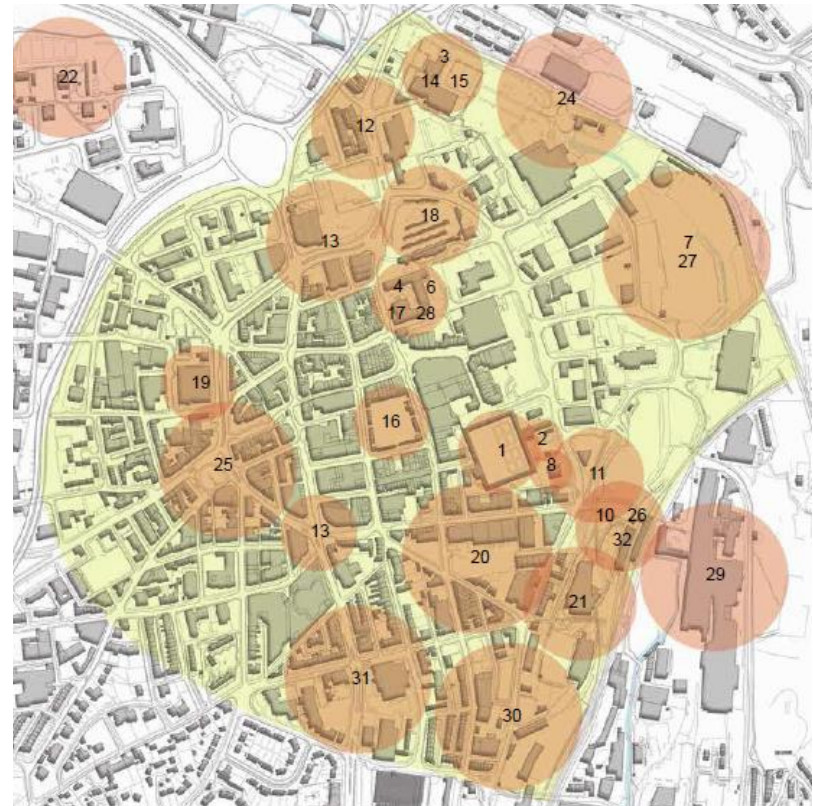
Town Centre Delivery Plan

Provide the Council with a set of realistic proposals that will further enhance the existing town centre offer and stimulate, generate and secure long term investment and development.

Potential Delivery Plan Objectives

- 1.Capitalise on WY+TF Investment.
- 2.Unlocking sites to attract investment
- 3.Attracting people to spend more time in Halifax town centre, creating vibrancy and buzz
- 4.Providing commercial accommodation to support existing business and encourage growth
- 5.Giving greater recognition to Halifax's heritage status
- 6.Broadening Halifax's social and cultural offer
- 7.Providing space to support skills and education

Potential Delivery Plan Sites



Green Agenda

Already taking place

- Appointment of Better Homes delivery consortium to provide energy saving and affordable warmth works to 1355 properties by Mar 2018
- Council initiative for Affordable Warmth in addition to above
- West Yorks plus York Car Club
- Electric vehicle charger points, tourism and others
- Environmental business audits and awards
- Calderdale Energy Future, Calderdale Community Energy

Planned

- Solar PV scheme for schools
- Joint funding bids for large scale works – district heating, eco tourism, transportation
- Development of Cromwell Bottom to include various renewable technologies
- Joint work promoting good air quality
- Energy Accelerator
- Proposed Hyrdro schemes at Cromwell Bottom and Copley at feasibility stage

Housing Agenda

- LEP Strategic Investment Priority 4 –
Delivering the infrastructure for growth
- “Regenerate key centres and expand and improve our housing stock to fit the growing needs of our residents and the economy”
- North Halifax Transformation
- Beech Hill (Halifax Town Centre proposal)

