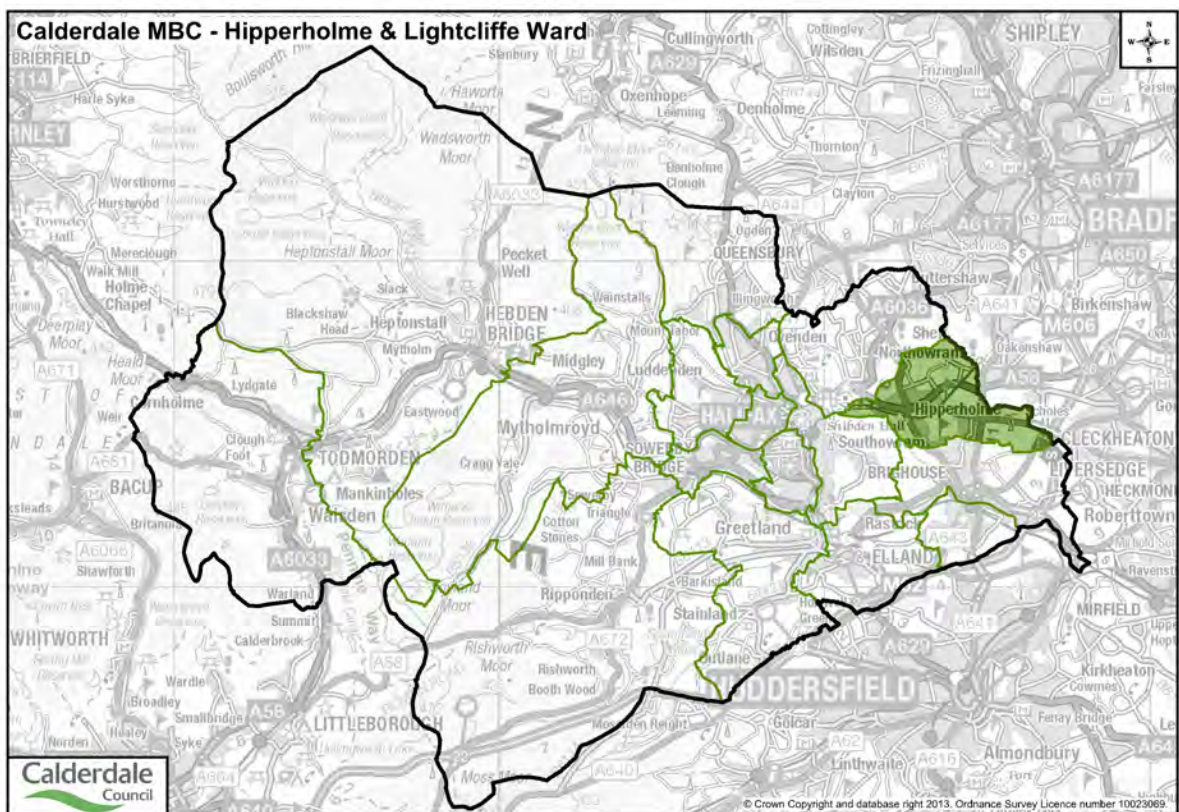


Review of Polling Districts, Polling Places and Polling Stations 2013

Hipperholme and Lightcliffe Ward



Review of Polling Districts, Polling Places and Polling Stations 2013

Introduction

Under the Representation of the People Act 1983, local authorities are required to divide their area into polling districts, to designate polling places for those polling districts and to keep their electoral arrangements under review.

The Electoral Administration Act 2006 introduced a duty for all polling districts and polling places to be reviewed every four years. The Council's first review was carried out in autumn 2007, followed by the second in autumn 2011.

Under the Electoral Registration and Administration Act 2013, local authorities are required to undertake a compulsory review of its polling districts and polling places in its area. The first compulsory review period begins with the 1st October 2013 and every fifth year after that.

Each polling district must offer reasonable facilities for voting for all its electors, as far as reasonably practicable in the circumstances.

Aim of the review

In conducting this review, the Council must seek to ensure that:-

- all electors in the constituency have such reasonable facilities for voting as are practicable in the circumstances;
- polling places are accessible to all electors and all sections of the community; and
- when considering or reviewing the designation of a polling place, have regard to the accessibility needs of disabled persons.

What is being reviewed?

- The polling district boundaries within each ward of the district
- The location of the polling station in each polling district
- The access to each polling station
- Buildings that might be considered for use as polling stations

What cannot be reviewed at this time?

- The ward boundaries
- The parish boundaries
- The parliamentary constituency boundaries

Who will be consulted?

- Residents of The Metropolitan Borough of Calderdale
- Local Councillors
- The Members of Parliament for the Constituencies of Halifax and Calder Valley
- Political parties
- Town and Parish Councils
- Voluntary Groups
- Community Groups
- Individuals and organisations with expertise on access issues

What happens next?

Deadline for submission of representations	Friday 8 th November 2013
Publication of the Returning Officer's provisional recommendations	Friday 15 th November 2013
Closing date for representations and comments on Returning Officer's recommendations	Friday 13 th December 2013
Final report to Governance and Business Committee	Monday 20 th January 2014
Final report to Full Council	Wednesday 12 th February 2014
Publication of result of review	Friday 14 th February 2014
Publication of revised register of electors based on new polling district boundaries.	Monday 17 th February 2014

Glossary of Terms

Parliamentary constituencies: it is important to note that these cannot be changed by this review. The subject of the review is the division of these constituencies into polling district and places.

Polling district: this is the area created by the division of a constituency or ward. Within this area, a polling place must be determined, which is convenient to electors registered in that area.

Polling place: the building or area in which polling stations will be selected by the Returning Officer

Polling station: the room or building where the poll takes place. This is chosen by the Returning Officer for the election and is published on various official notices and communicated to the electorate via poll card.

Guidance on Submission of Representations and Suggestions

This ward information booklet is designed to help the electorate in making informed representations and suggestions to the Returning Officer about the allocation of polling places in the Metropolitan Borough of Calderdale.

Maps are available for inspection in the following locations:

- Town Hall, Halifax,
- Electoral Services Unit, Northgate House, Halifax.

Copies of this booklet are available at:

- Town Hall, Halifax.
- Electoral Services Unit, Northgate House, Halifax.
- Customer First Brighouse, Brighouse Civic Hall, Bradford Road, Brighouse.
- Customer First Elland, Southgate, Elland.
- Customer First Sowerby Bridge, Carlton Mill, Wharf Street, Sowerby Bridge.
- Customer First Hebden Bridge, Town Hall, Hebden Bridge.
- Customer First Todmorden, Calderdale Community College, Burnley Road, Todmorden.

What makes a suitable polling place?

It is important to consider what factors define a good polling place when submitting any suggestions. It is important that alternative premises are identified when suggesting a change in polling place.

A polling place should have, as a minimum, the following characteristics:

- 1) It should be central relative to the location of electors in the polling district, where possible.
- 2) Accessibility for all electors, including those with disabilities, where possible.
- 3) Adequate, safe parking for the size of the electorate. The car park (if any) and area around the station, should be well lit, as the station is open until 10:00pm
- 4) Facilities for polling staff, e.g. toilets, kitchen or coffee & tea making facilities, heating/cooling systems, comfortable adult sized chairs and tables.
- 5) The size of the room/building used as the polling station must be adequate for the size of the electorate.

Electorate Information

Hipperholme and Lightcliffe Ward

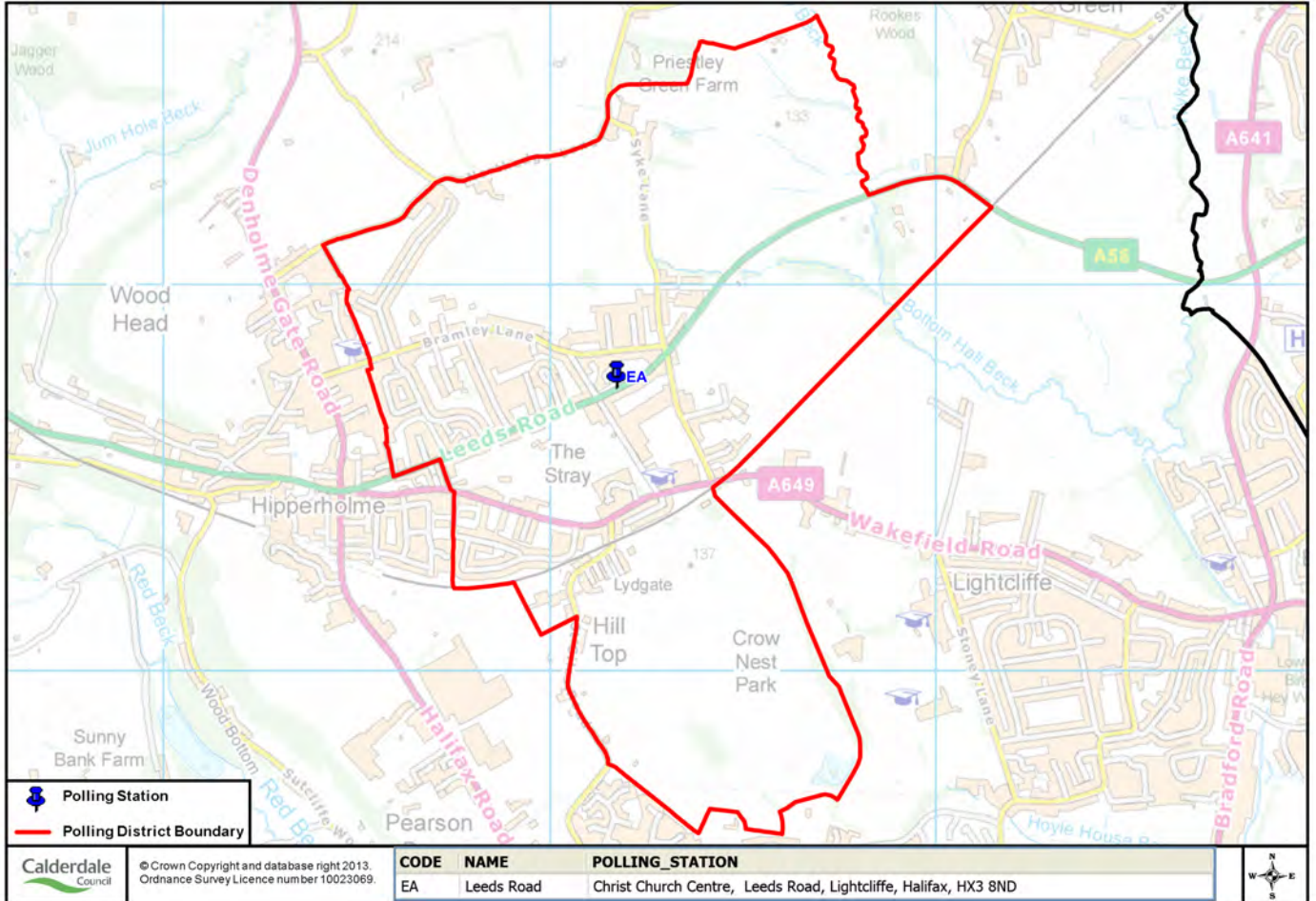
Electors – this is the number of electors included in the register of electors as published on the 1st September 2013.

Properties – this is the number of properties included in the register of electors as published on the 1st September 2013.

PD Ref	Polling District Name	Total no of registered electors	No of electors registered to vote in person	No of electors registered absent voters	No of Properties
EA	LEEDS ROAD	1844	1359	485	995
EB	HIPPERHOLME	1807	1342	465	1128
EC	NORWOOD GREEN	433	344	89	248
ED	LIGHTCLIFFE	1552	1140	412	935
EE	ST CHAD'S	1149	903	246	763
EF	BAILIFF BRIDGE	2082	1618	464	1214
Total		8867	6706	2161	5283

Polling District and Polling Place Details

EA - LEEDS ROAD
CHRIST CHURCH CENTRE (LIGHTCLIFFE SITE), LEEDS ROAD,
LIGHTCLIFFE, HALIFAX

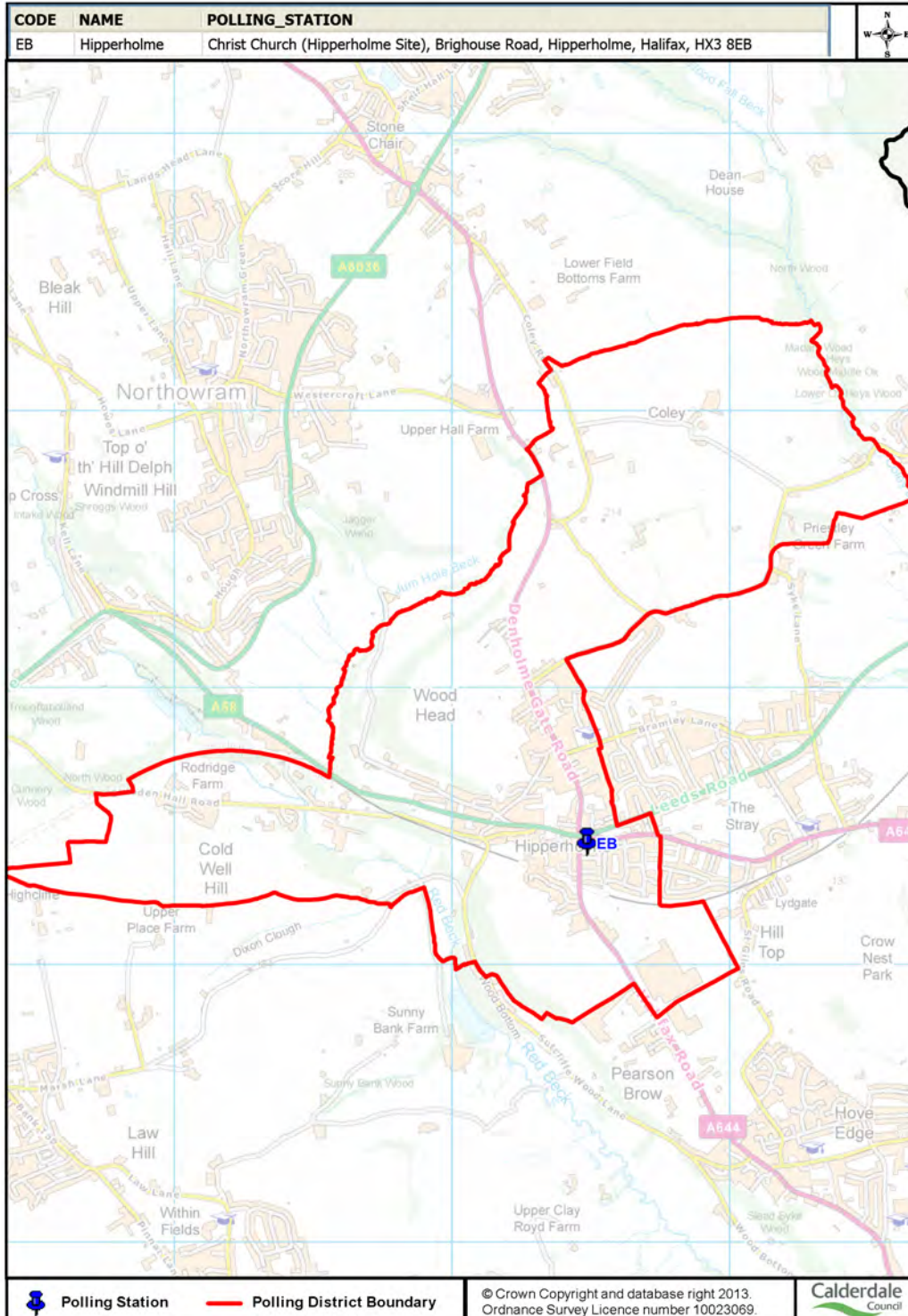


Additional Information

Disabled Access - YES

Polling District and Polling Place Details

EB - HIPPERHOLME
 CHRIST CHURCH (HIPPERHOLME SITE), BRIGHOUSE ROAD,
 HIPPERHOLME, HALIFAX

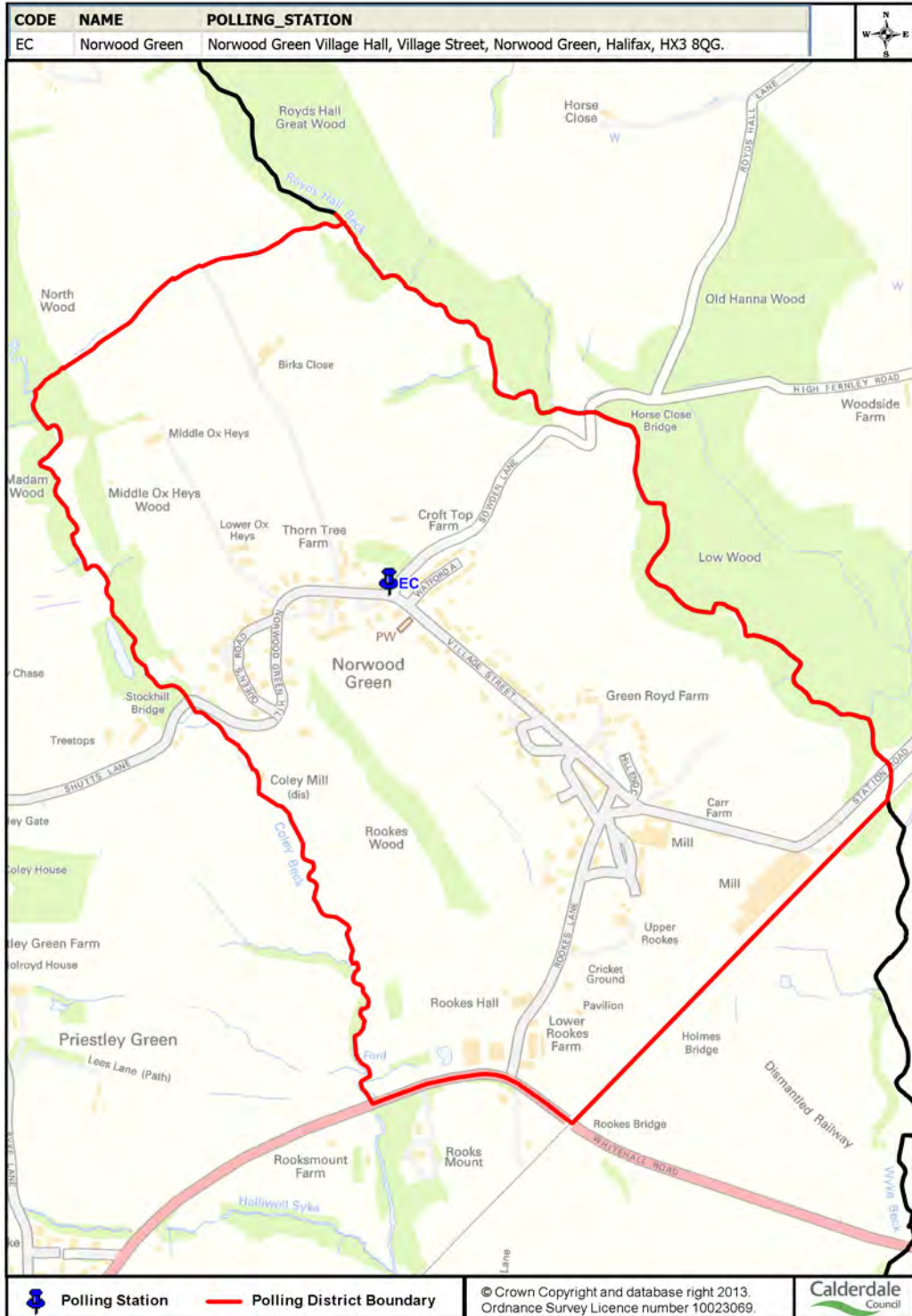


Additional Information

Disabled Access - YES

Polling District and Polling Place Details

EC - NORWOOD GREEN
 NORWOOD GREEN VILLAGE HALL, VILLAGE STREET, NORWOOD GREEN,
 GREEN, HALIFAX

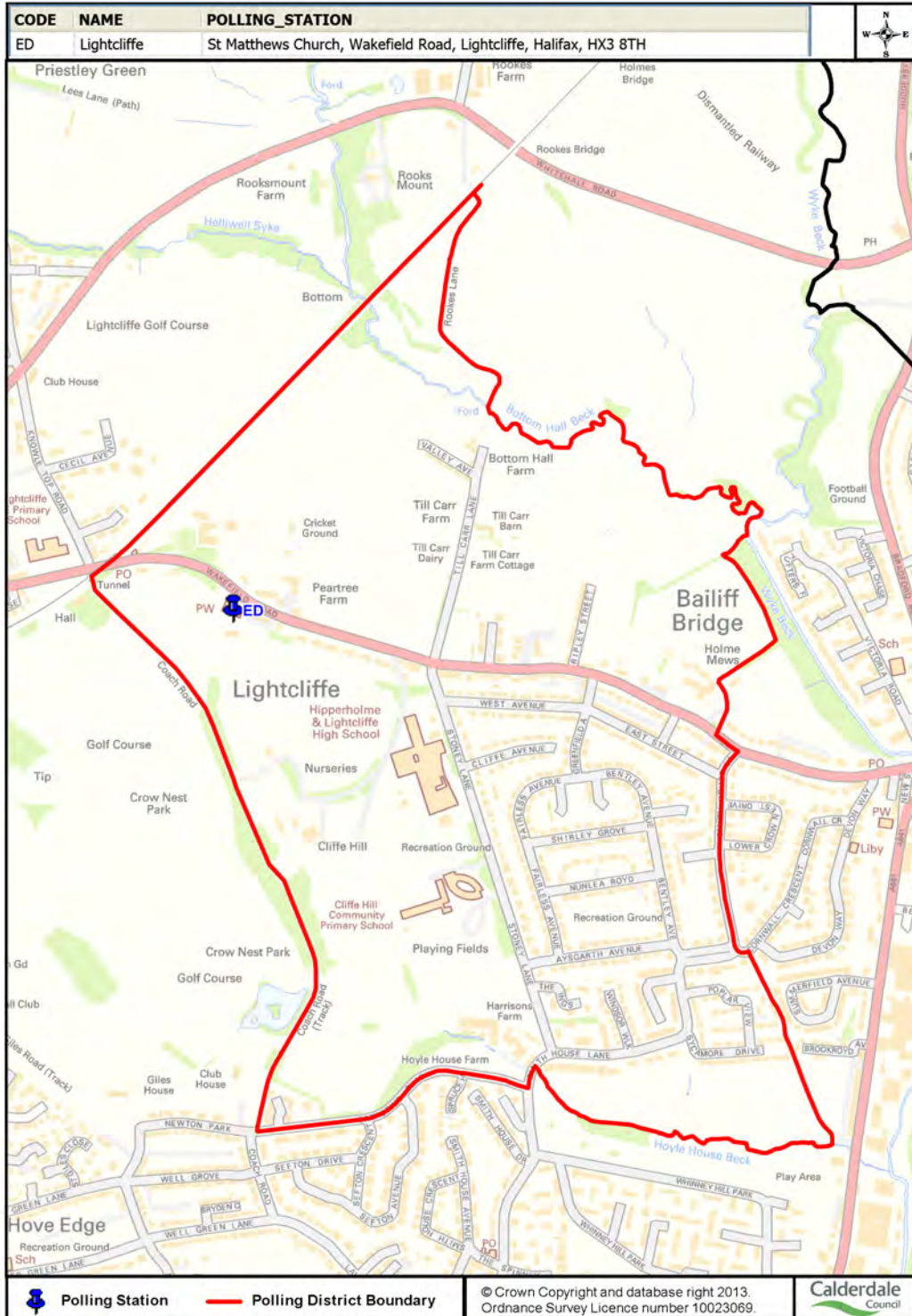


Additional Information

Disabled Access - YES

Polling District and Polling Place Details

ED - LIGHTCLIFFE
ST MATTHEW'S CHURCH, WAKEFIELD ROAD, LIGHTCLIFFE, HALIFAX

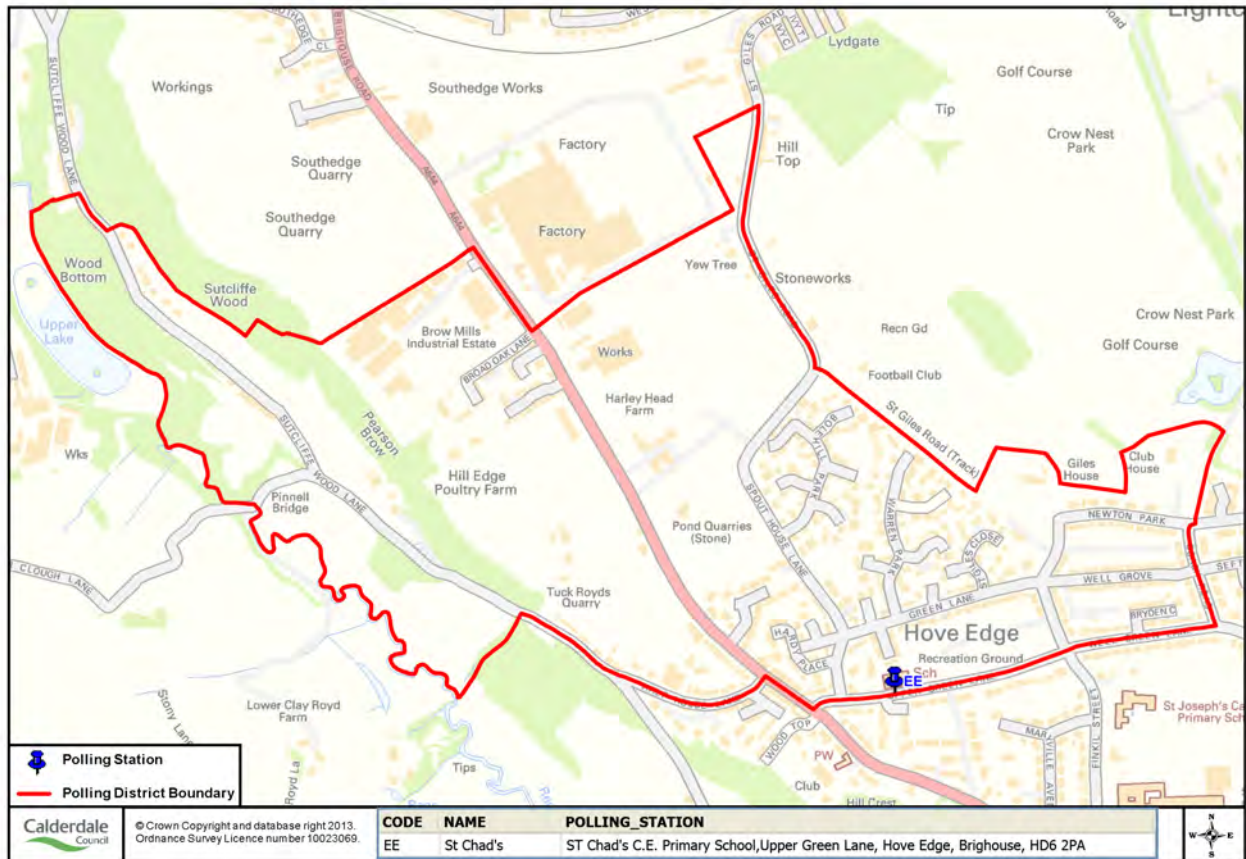


Additional Information

Disabled Access - YES

Polling District and Polling Place Details

EE - ST CHAD'S
ST CHAD'S C. E. PRIMARY SCHOOL, UPPER GREEN LANE, HOVE EDGE,
BRIGHOUSE

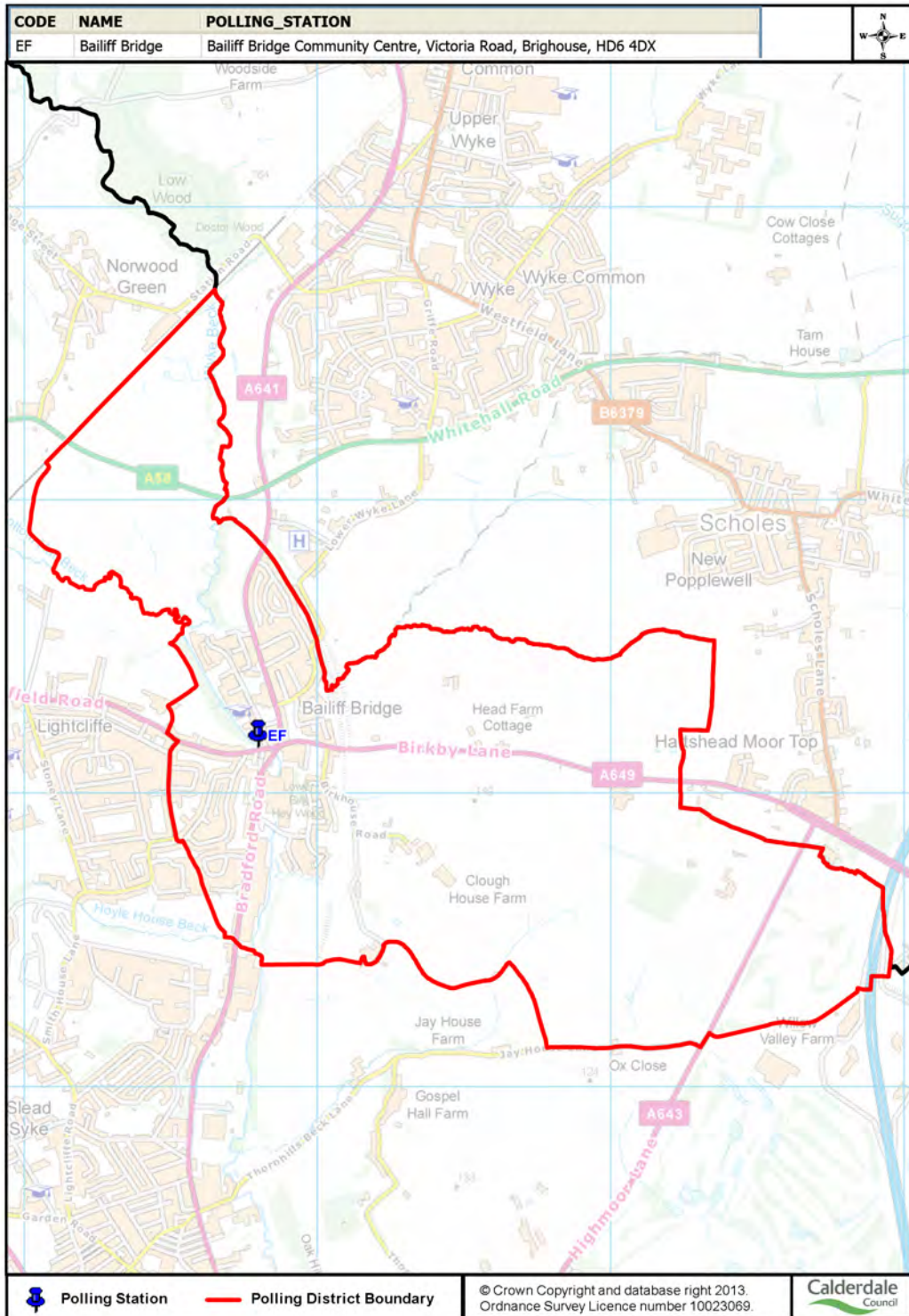


Additional Information

Disabled Access - YES

Polling District and Polling Place Details

EF - BAILIFF BRIDGE
 BAILIFF BRIDGE COMMUNITY CENTRE, VICTORIA ROAD, BRIGHOUSE,
 HD6 4DX



Additional Information

Disabled Access - YES