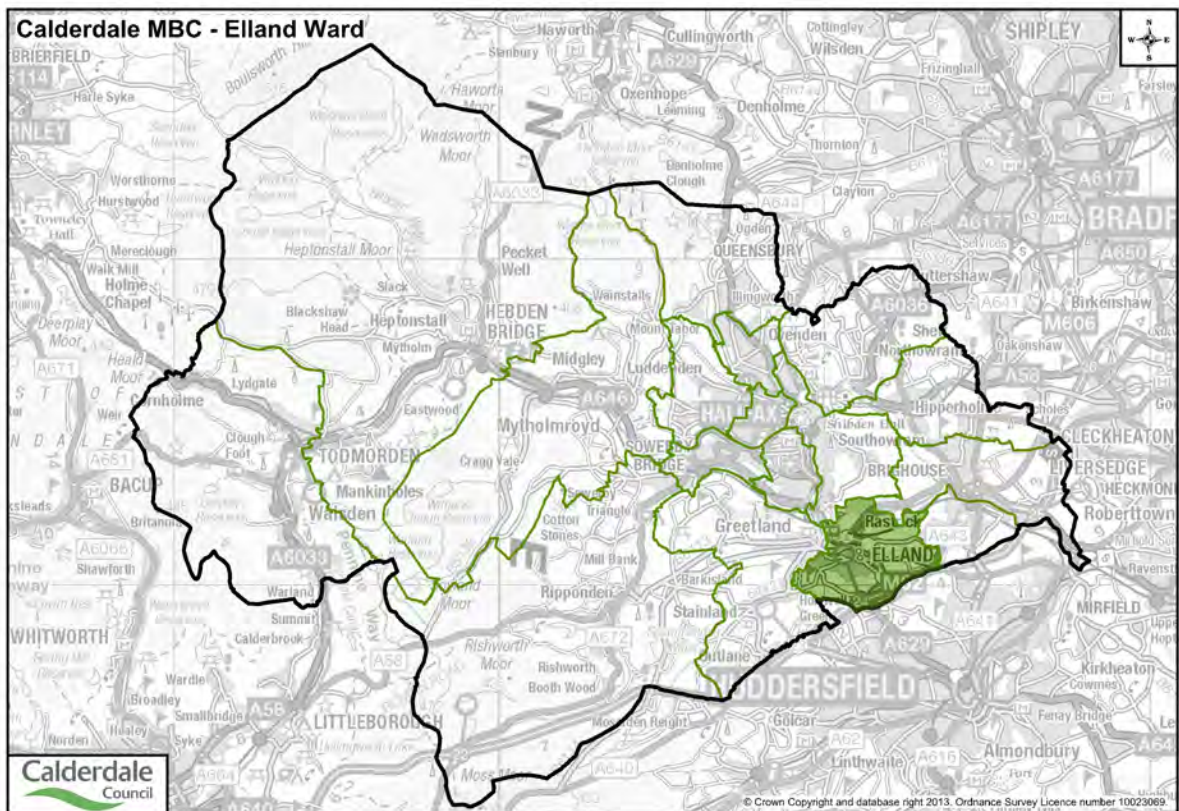


**Review of Polling Districts, Polling Places and Polling Stations 2013**

**Elland Ward**



## **Review of Polling Districts, Polling Places and Polling Stations 2013**

### **Introduction**

Under the Representation of the People Act 1983, local authorities are required to divide their area into polling districts, to designate polling places for those polling districts and to keep their electoral arrangements under review.

The Electoral Administration Act 2006 introduced a duty for all polling districts and polling places to be reviewed every four years. The Council's first review was carried out in autumn 2007, followed by the second in autumn 2011.

Under the Electoral Registration and Administration Act 2013, local authorities are required to undertake a compulsory review of its polling districts and polling places in its area. The first compulsory review period begins with the 1<sup>st</sup> October 2013 and every fifth year after that.

Each polling district must offer reasonable facilities for voting for all its electors, as far as reasonably practicable in the circumstances.

### **Aim of the review**

In conducting this review, the Council must seek to ensure that:-

- all electors in the constituency have such reasonable facilities for voting as are practicable in the circumstances;
- polling places are accessible to all electors and all sections of the community; and
- when considering or reviewing the designation of a polling place, have regard to the accessibility needs of disabled persons.

### **What is being reviewed?**

- The polling district boundaries within each ward of the district
- The location of the polling station in each polling district
- The access to each polling station
- Buildings that might be considered for use as polling stations

### **What cannot be reviewed at this time?**

- The ward boundaries
- The parish boundaries
- The parliamentary constituency boundaries

## Who will be consulted?

- Residents of The Metropolitan Borough of Calderdale
- Local Councillors
- The Members of Parliament for the Constituencies of Halifax and Calder Valley
- Political parties
- Town and Parish Councils
- Voluntary Groups
- Community Groups
- Individuals and organisations with expertise on access issues

## What happens next?

Deadline for submission of representations	Friday 8 <sup>th</sup> November 2013
Publication of the Returning Officer's provisional recommendations	Friday 15 <sup>th</sup> November 2013
Closing date for representations and comments on Returning Officer's recommendations	Friday 13 <sup>th</sup> December 2013
Final report to Governance and Business Committee	Monday 20 <sup>th</sup> January 2014
Final report to Full Council	Wednesday 12 <sup>th</sup> February 2014
Publication of result of review	Friday 14 <sup>th</sup> February 2014
Publication of revised register of electors based on new polling district boundaries.	Monday 17 <sup>th</sup> February 2014

## Glossary of Terms

**Parliamentary constituencies:** it is important to note that these cannot be changed by this review. The subject of the review is the division of these constituencies into polling district and places.

**Polling district:** this is the area created by the division of a constituency or ward. Within this area, a polling place must be determined, which is convenient to electors registered in that area.

**Polling place:** the building or area in which polling stations will be selected by the Returning Officer

**Polling station:** the room or building where the poll takes place. This is chosen by the Returning Officer for the election and is published on various official notices and communicated to the electorate via poll card.

## **Guidance on Submission of Representations and Suggestions**

This ward information booklet is designed to help the electorate in making informed representations and suggestions to the Returning Officer about the allocation of polling places in the Metropolitan Borough of Calderdale.

Maps are available for inspection in the following locations:

- Town Hall, Halifax.
- Electoral Services Unit, Northgate House, Halifax.

Copies of this booklet are available at:

- Town Hall, Halifax.
- Electoral Services Unit, Northgate House, Halifax.
- Customer First Brighouse, Brighouse Civic Hall, Bradford Road, Brighouse.
- Customer First Elland, Southgate, Elland.
- Customer First Sowerby Bridge, Carlton Mill, Wharf Street, Sowerby Bridge.
- Customer First Hebden Bridge, Town Hall, Hebden Bridge.
- Customer First Todmorden, Calderdale Community College, Burnley Road, Todmorden.

### **What makes a suitable polling place?**

It is important to consider what factors define a good polling place when submitting any suggestions. It is important that alternative premises are identified when suggesting a change in polling place.

A polling place should have, as a minimum, the following characteristics:

- 1) It should be central relative to the location of electors in the polling district, where possible.
- 2) Accessibility for all electors, including those with disabilities, where possible.
- 3) Adequate, safe parking for the size of the electorate. The car park (if any) and area around the station, should be well lit, as the station is open until 10:00pm
- 4) Facilities for polling staff, e.g. toilets, kitchen or coffee & tea making facilities, heating/cooling systems, comfortable adult sized chairs and tables.
- 5) The size of the room/building used as the polling station must be adequate for the size of the electorate.

## Electorate Information

### Elland Ward

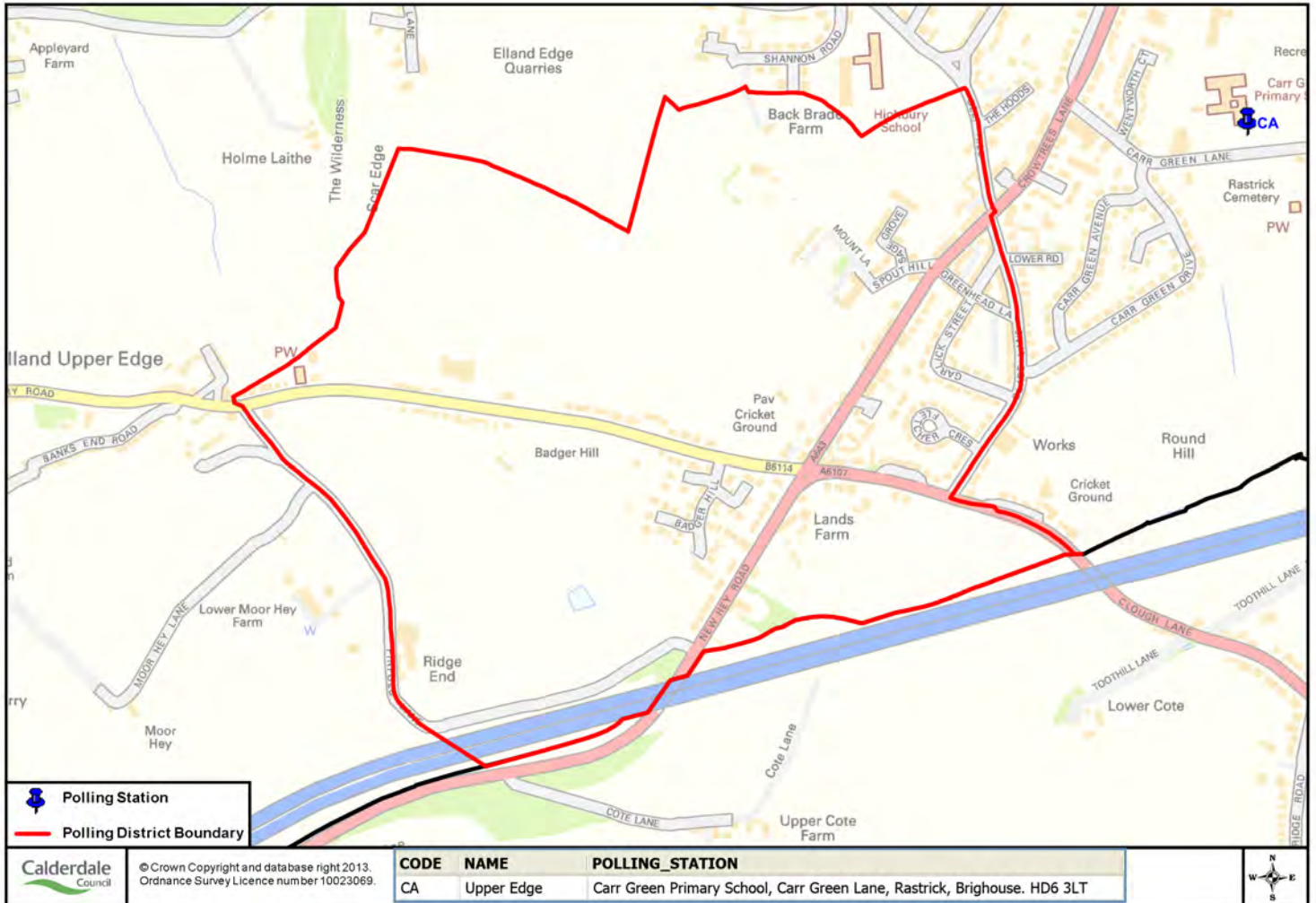
Electors – this is the number of electors included in the register of electors as published on the 1<sup>st</sup> September 2013.

Properties – this is the number of properties included in the register of electors as published on the 1<sup>st</sup> September 2013.

<b>PD Ref</b>	<b>Polling District Name</b>	<b>Total no of registered electors</b>	<b>No of electors registered to vote in person</b>	<b>No of electors registered absent voters</b>	<b>No of Properties</b>
CA	UPPER EDGE	835	659	176	510
CB	WESTGATE	1550	1213	337	1174
CC	ELLAND CENTRAL	1506	1265	241	1065
CD	SAVILE ROAD	1234	1012	222	755
CE	OLD EARTH	1956	1555	401	1211
CF	AINLEY TOP	419	339	80	248
CG	BROOKSBANK	957	691	266	529
<b>Total</b>		<b>8457</b>	<b>6734</b>	<b>1723</b>	<b>5492</b>

## Polling District and Polling Place Details

CA - UPPER EDGE  
CARR GREEN PRIMARY SCHOOL, CARR GREEN LANE, BRIGHOUSE

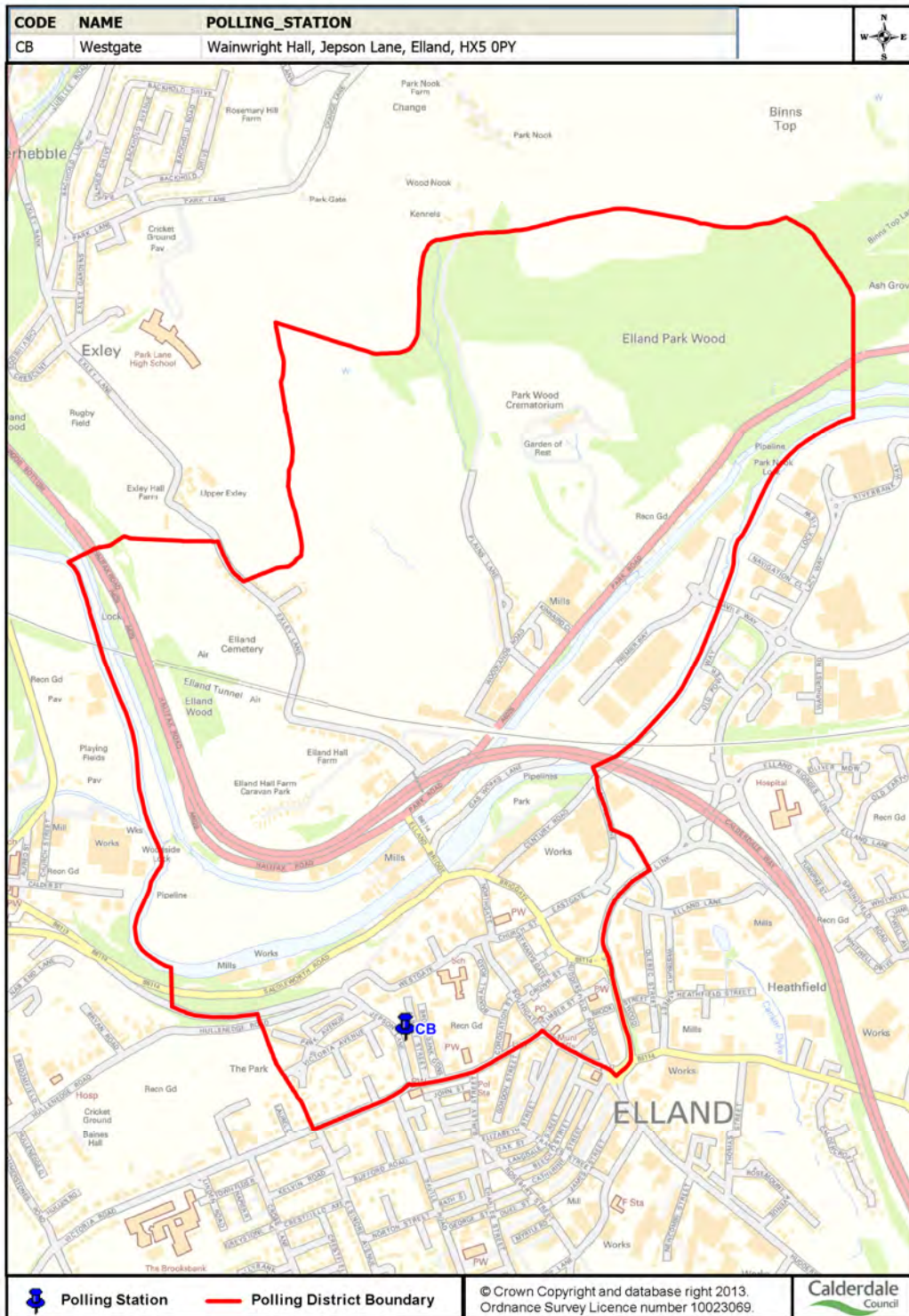


### Additional Information

Disabled Access - YES

## Polling District and Polling Place Details

CB - WESTGATE  
WAINWRIGHT HALL, JEPSON LANE, ELLAND

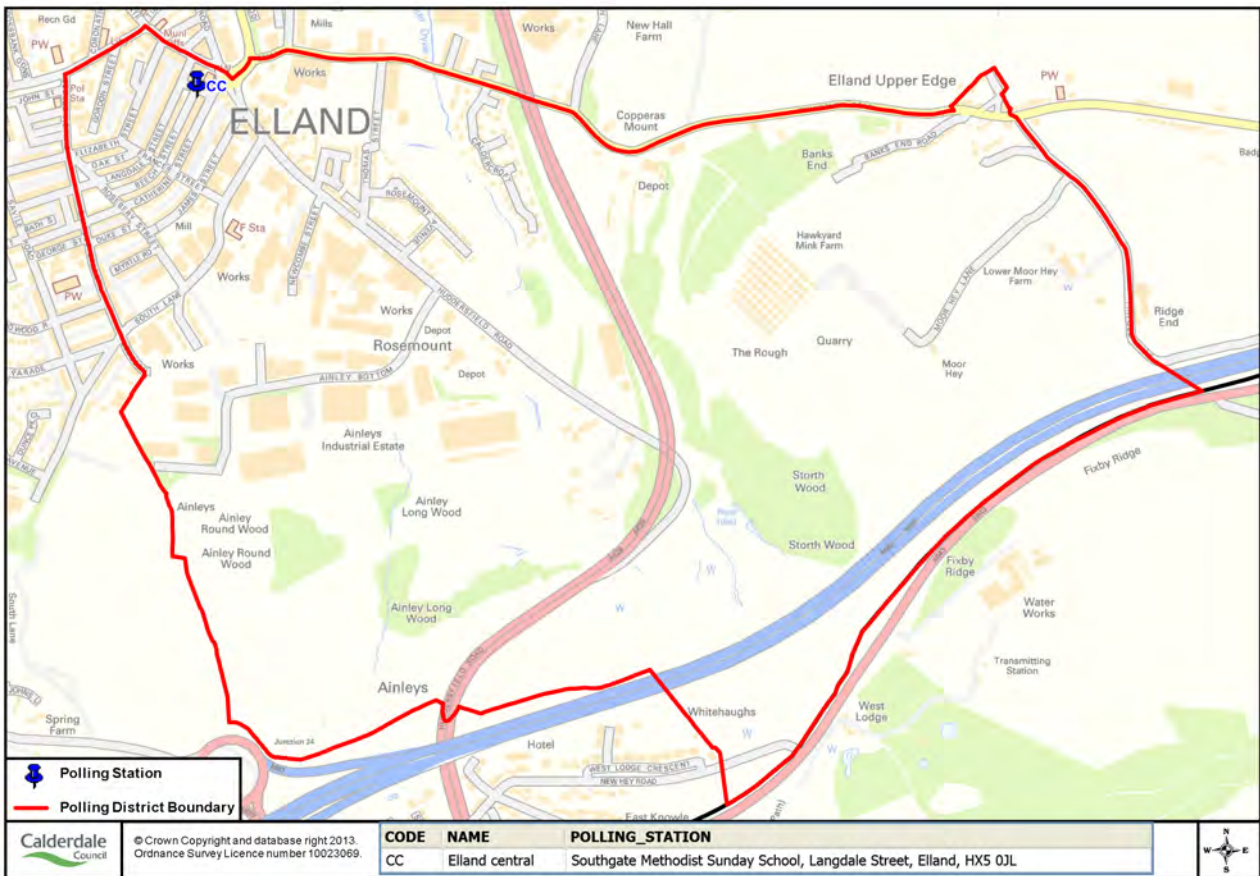


### Additional Information

Disabled Access - YES

## Polling District and Polling Place Details

CC - ELLAND CENTRAL  
SOUTHGATE METHODIST SUNDAY SCHOOL, LANGDALE STREET,  
ELLAND



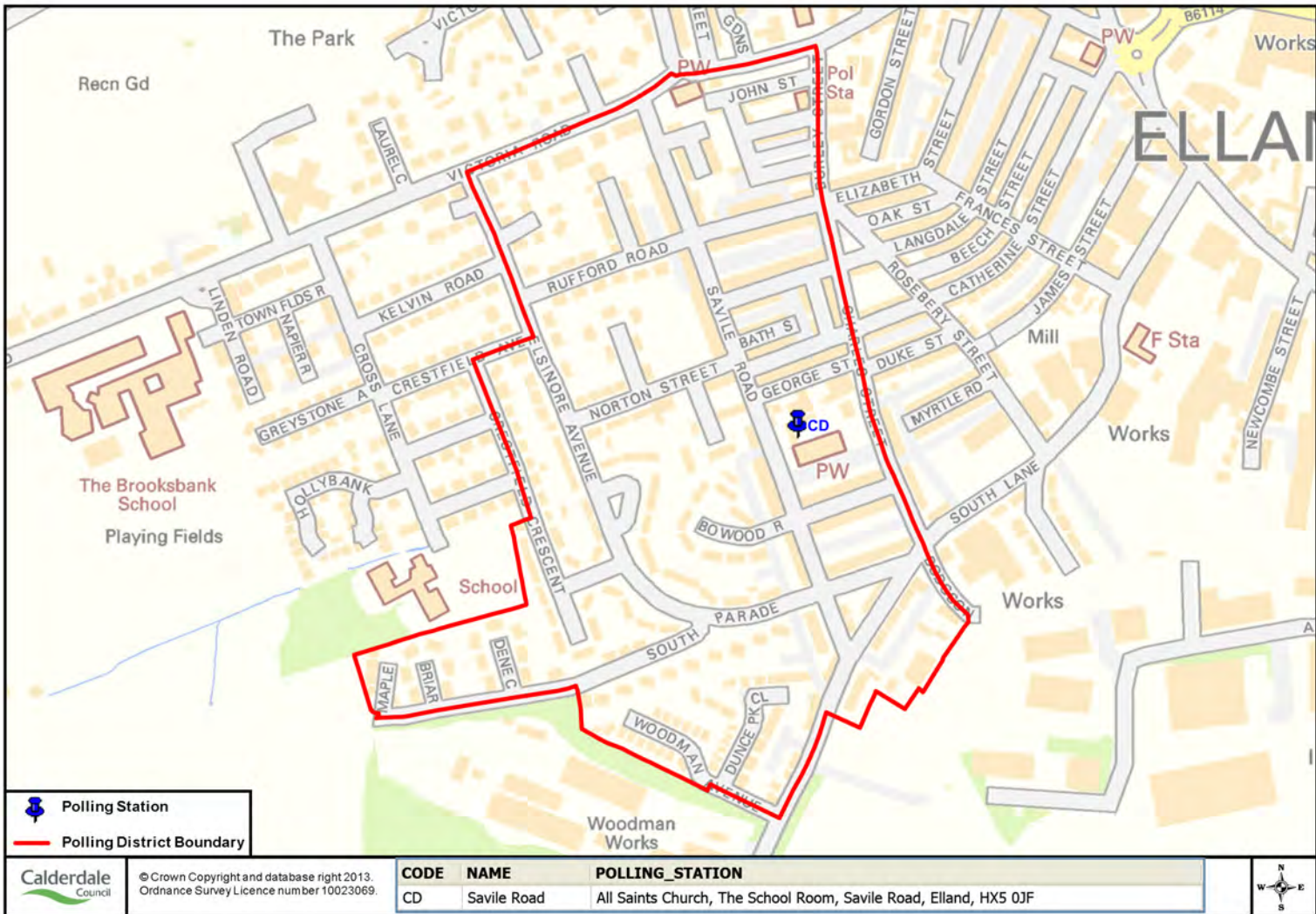
### Additional Information

Disabled Access - YES



## Polling District and Polling Place Details

CD - SAVILE ROAD  
 ALL SAINTS CHURCH, THE SCHOOL ROOM, SAVILE ROAD, ELLAND

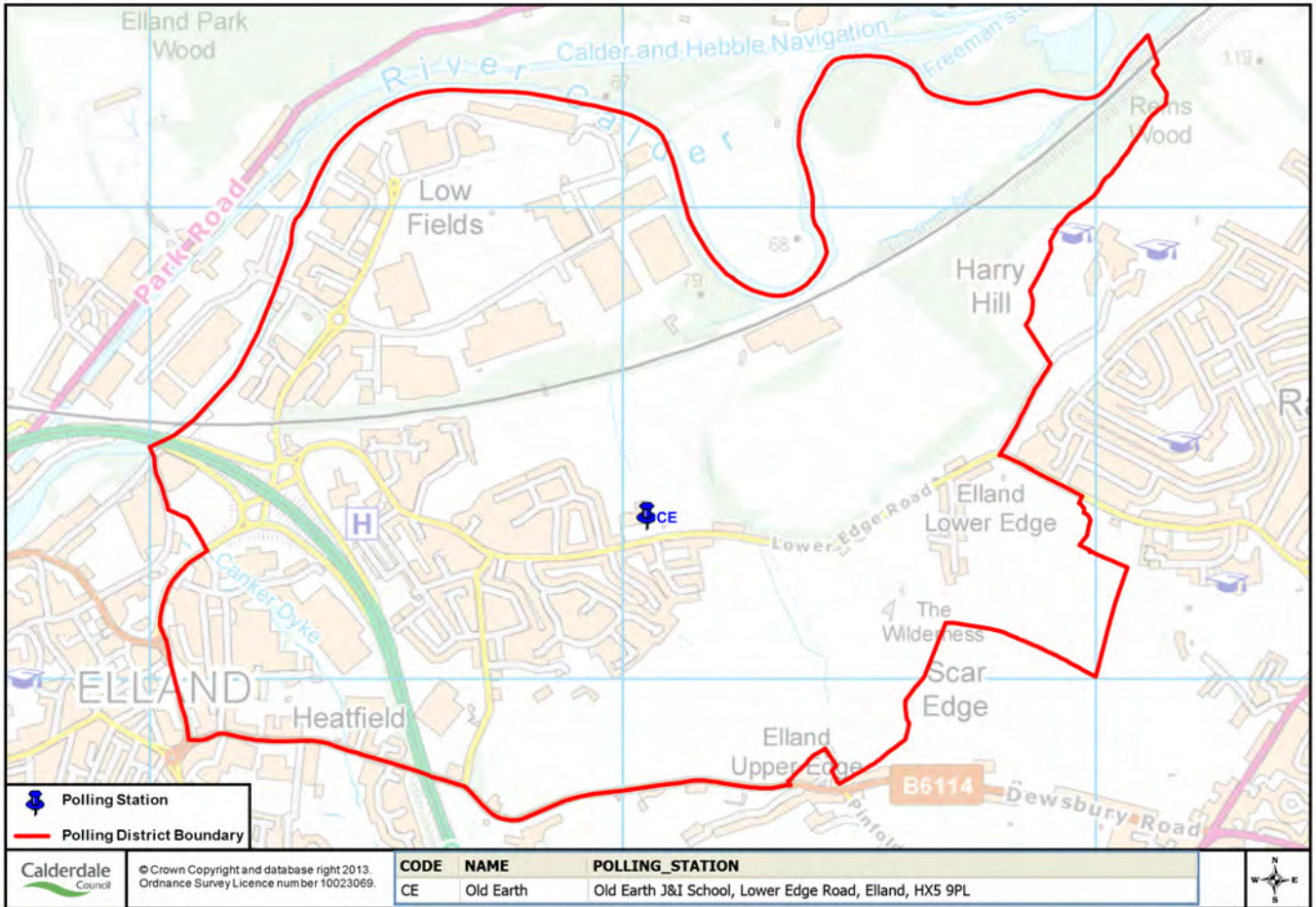


### Additional Information

Disabled Access - YES

## Polling District and Polling Place Details

CE - OLD EARTH  
 OLD EARTH J & I SCHOOL, LOWER EDGE ROAD, ELLAND

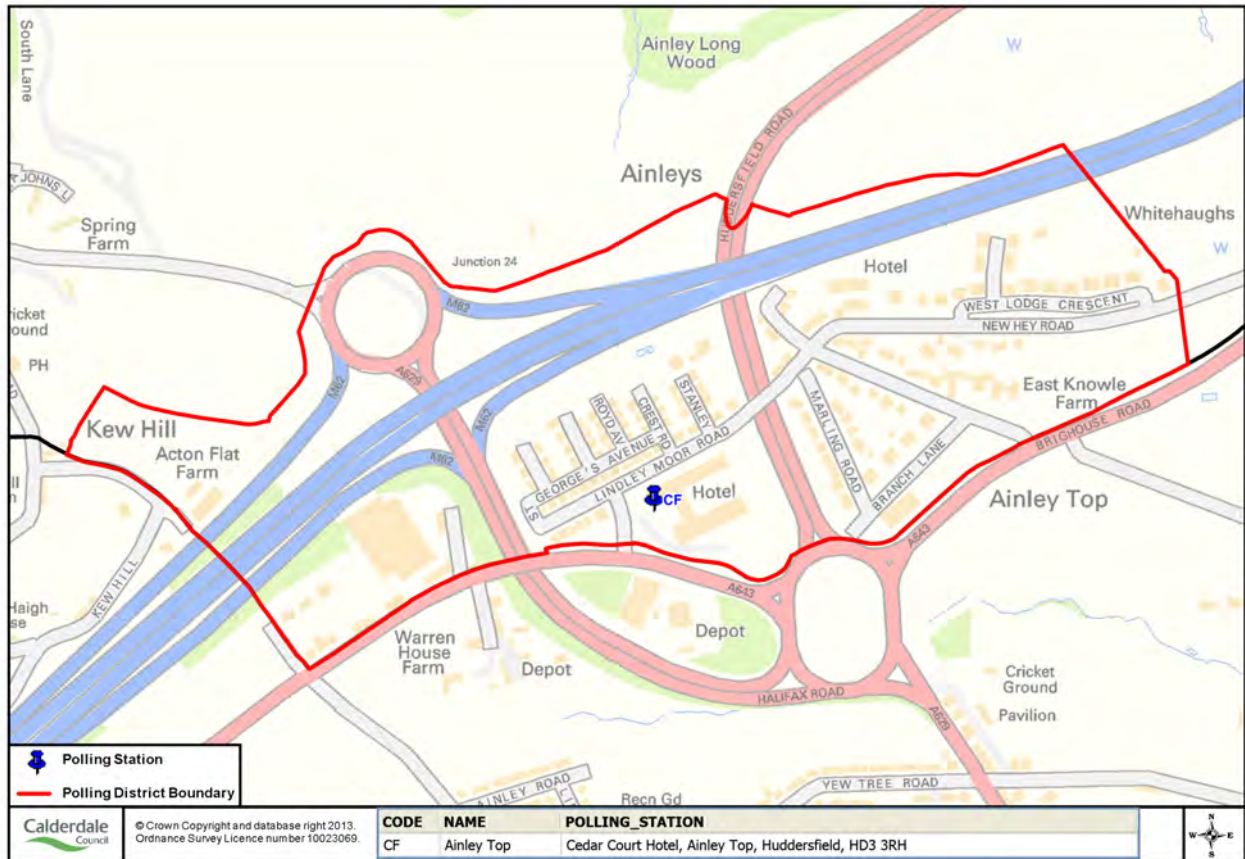


### Additional Information

Disabled Access - YES

## Polling District and Polling Place Details

CF - AINLEY TOP  
CEDAR COURT HOTEL, AINLEY TOP, HUDDERSFIELD

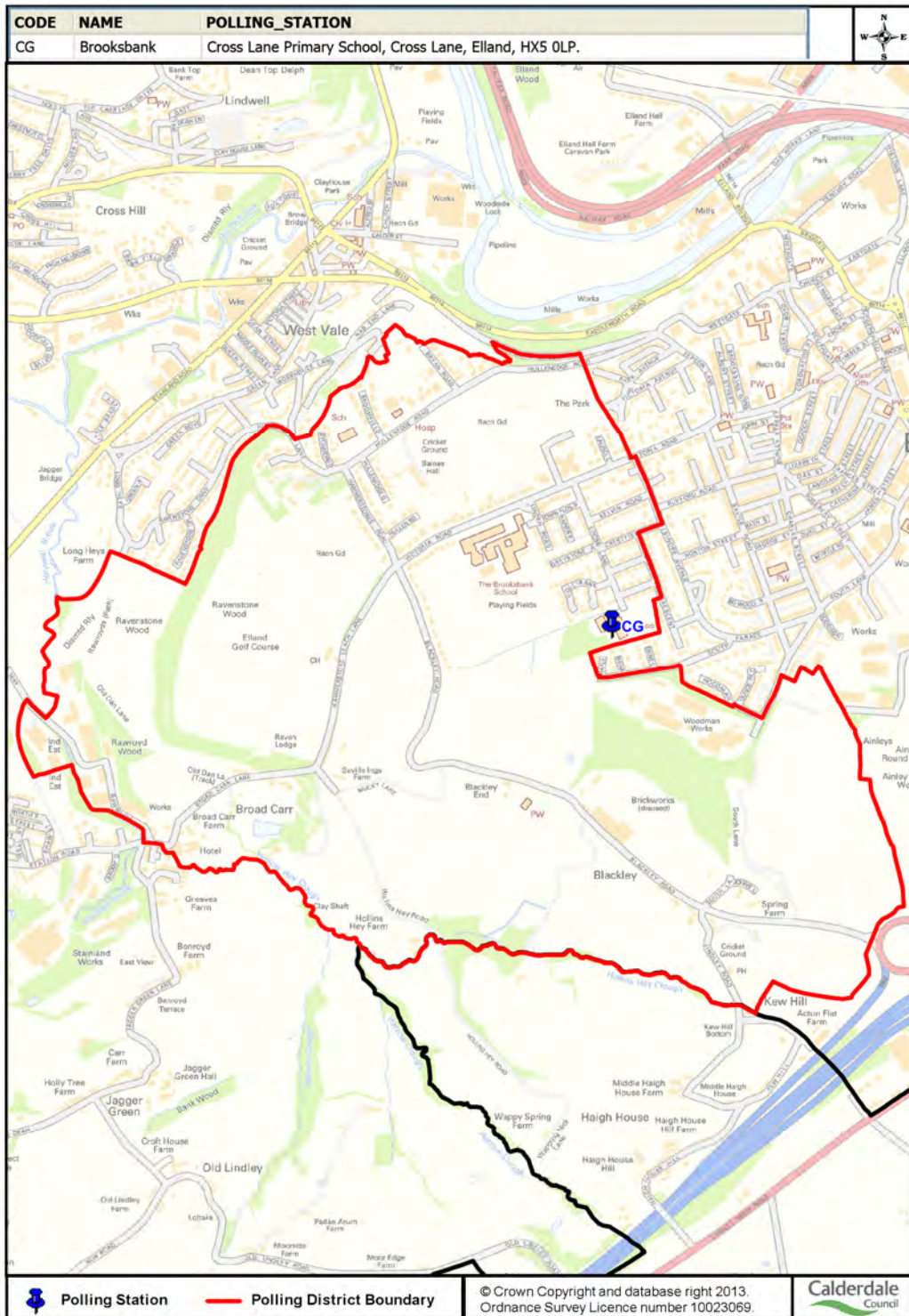


### Additional Information

Disabled Access - YES

## Polling District and Polling Place Details

CG - BROOKSBANK  
CROSS LANE PRIMARY SCHOOL, CROSS LANE, ELLAND



### Additional Information

Disabled Access - YES