

CHILDREN AND YOUNG PEOPLE'S PARTNERSHIP EXECUTIVE STRATEGIC PLAN 2016

Children and Young People's Partnership Strategic Planning Framework 2016 – 2020

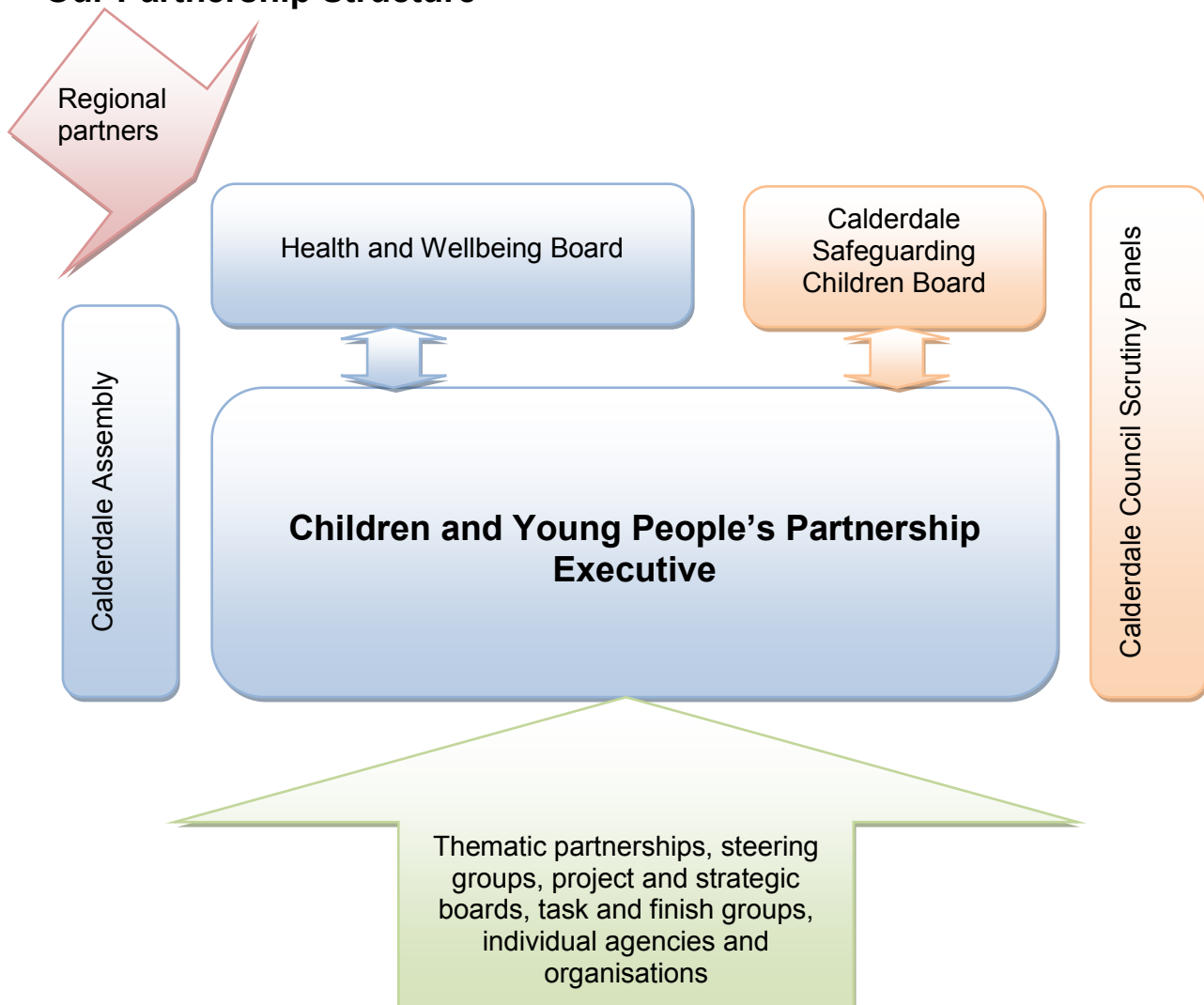


The Children and Young People's Partnership Executive sits beneath the Calderdale Health and Wellbeing Board and takes the lead on the Board's strategic priority that "Every child will have a healthy start and continue to lead a safe, happy life with every opportunity to achieve their potential within their families and communities".

Our Vision

All Children in Calderdale are Healthy - Happy – Safe – Successful
Calderdale is a Child-Friendly Borough

Our Partnership Structure



Our Partnership Plans

JSNA/ eHNA

Voice of the Child/ user voice

CYPPE Strategic Planning Framework

Shared Strategic Plans
Transformation Plans
Individual Business Plans
Public Sector Service Plans
Improvement Plans
Outcome Frameworks
Project Plans

All Children in Calderdale are Healthy - Happy – Safe – Successful
and Calderdale is a Child-Friendly Borough

We will achieve our vision by

- Focusing on outcomes for children and young people including those with complex needs or special educational needs;
- Using resources jointly for those in greatest need, based on intelligence from the Joint Strategic Needs Assessment, electronic Health Needs Assessment and user experience;
- Focusing on early intervention and prevention;
- Ensuring that safeguarding children and young people is everyone's responsibility.
- Delivering services locally and close to home;
- Working in partnership and alliances and through innovative joint arrangements;
- Delivering national priorities to meet local needs and build on local solutions;
- Involving families, parents, carers, children and young people in decision making;
- Encouraging collaboration especially in frontline delivery;
- Developing innovative and creative ways of working;
- Achieving 'good' or 'outstanding' assessment for all our services;
- Celebrating the diverse nature of our communities, building on our different strengths;
- Demonstrating and promoting excellence which is regionally and nationally recognised;
- Demonstrating a sense of pride in Calderdale amongst our workforce; and
- Reducing the impact of poverty for those children and young people who are born in and live in poverty.

Our Strategic Priorities

Together, we have agreed six strategic priorities which underpin and drive all of our work, in partnership and in our separate organisations, so that children and young people in Calderdale:

- Start healthy and stay healthy
- Are safe at home, in school and in the community
- Enjoy learning and achieve their best
- Develop social skills and take part in activities
- Have a voice in the decisions that affect their lives
- Stay in education and get a job

Our Values

We share these values as the basis for our work

- **Respect** value, regard and reliability
- **Inclusion** belonging and involvement
- **Integrity** honesty and trust
- **Commitment** tenacity and courage
- **Fairness** fair and equitable

This framework was agreed by the Children and Young People's Partnership Executive on 23rd September 2016, and will be reviewed by September 2019.

For more information about this document, please contact Sarah Manfredi
Calderdale Council; sarah.manfredi@calderdale.gov.uk; 01422 3929555

Strategic Priority 1: Start healthy and stay healthy

Key priorities:

- Increase the proportion of children and young people who are in good physical and mental health
- Increase the proportion of children and young people who lead healthy lives
- Increase the proportion of children and young people who avoid harmful health behaviours
- Increase the proportion of children and young people who are emotionally resilient
- Increase the proportion of children who have a healthy start in life

Key outcomes

Outcome
Children and young people are physically and emotionally happy, healthy and safe

Key performance indicators

Measure
Reduced number and percentage of overweight (including obese) children in Reception and at aged 10-11
Reduced rate of deaths in infants aged under 1 year per 1,000 live births
Reduced number and percentage of young people smoking at age 15 - regular smokers (at least monthly)
Reduced rate of conceptions per 1,000 females aged 15-17
Higher proportion of young people who are happy with how they look – Years 5,6,7,10,12

Strategic Priority 2: Are safe at home, in school and in the community

Key priorities:

- Reduce the numbers of children and young people missing from home, care and education
- Reduce the number of children and young people who are at risk of child sexual exploitation and child sexual abuse
- Reduce the harm caused to children and young people through domestic abuse, parental substance misuse and mental health issues
- Increase the number of children and young people who feel safe online

Key outcomes

Outcome
Children and young people are safer

Key performance indicators

Indicator
Increase in the number of children and young people who say they feel safe at school
Increase in the number of children and young people who say they feel safe in the community
Increase in the number of children and young people who say they feel safe online
Reduced percentage of children and young people reporting that they have been bullied
Children Looked After – reduction in number of children looked after per 10,000 of population
Percentage of children becoming the subject of a Child Protection Plan for 2 nd or subsequent time
Reducing the number of children and young people who are missing from home, care and education
Number of children and young people receiving support through the Early Intervention Panels
Reduced number of domestic abuse incidents recorded by the police
Reduced percentage of repeat incidents of domestic abuse
Number of children and young people reducing risk level from High/Medium to Low

Strategic Priority 3: Enjoy learning and achieve their best

Key priorities

- Raise attainment to narrow the gap in the early years and amongst specific groups
- Increase the number of schools judged as good and outstanding
- Develop and embed collaborative practice across all phases of education
- Give particular focus to literacy and numeracy skills

Key outcomes

Outcome
Children and young people reach their full attainment potential regardless of background

Key performance indicators

Indicator				
ALL of the education measures below are set nationally by the Department for Education and are subject to change. However, within every performance framework there is always an 'expected' level, and this is the benchmark that will be used in the indicators below. The detail and wording of this might change in line with national policy.				
Where indicators are changed by the DfE, a baseline for the new measures will be needed. At Key Stage 4, the Attainment 8 and Progress 8 measures were introduced by the DfE in 2016. Figures from 2016 will establish a baseline and increases will be tracked from 2017 onwards. Progress score at KS1 and KS2 will be available at local authority level from December 2016, with increases tracked from 2017 onwards.				
	Early Years	Key Stage 1	Key Stage 2	Key Stage 4
Increased overall attainment	% achieving good level of development	% achieving expected standard in Reading & Writing & Maths	% achieving expected standard in Reading & Writing & Maths	Attainment 8 score
Positive and improving progress for every child through the different stages of education	n/a	LA score	LA score	Progress 8 score
Reduced gap in average attainment between children and young people eligible for Pupil Premium and the 'national other'	% achieving good level of development	% achieving expected standard in Reading & Writing & Maths	% achieving expected standard in Reading & Writing & Maths	Attainment 8 score

	Early Years	Key Stage 1	Key Stage 2	Key Stage 4
Reduced gap in average attainment between children looked after and the 'national other' *	% achieving good level of development	% achieving expected level	% achieving expected level	Attainment 8 score
Reduced gap in average attainment between children and young people with SEND and the national cohort*	% achieving good level of development	% achieving expected level	% achieving expected level	Attainment 8 score
Increased number of schools judged as 'good' or 'outstanding' by Ofsted				
Reduction in unauthorised absences in primary and secondary schools				
Positive evaluation of partnership engagement as part of the annual review by Cluster Officers.				

*The CLA cohort in any given year will consist of only a small number of pupils. Caution should be used with percentages and for comparisons between years.

Strategic Priority 4: Develop social skills and take part in activities

Key priorities

- Support children and young people to build social capital through friends, family and communities
- Create opportunities for children and young people to take part in positive activities outside school

Key outcomes

Outcome
Children and young people have higher levels of personal resilience

Key performance indicators

Indicator
Maintain the number of opportunities locally for children and young people to take part in activities outside school
Increased number of children and young people with moderate or good self-esteem
Increased number of children and young people who get on well with the people they live with
Increased % of children and young people who take part in extra activities such as teams and clubs quite often or all the time
Increased % of children and young people who have someone they trust
Increased number and range of schools and settings involved with the eHNA

Strategic Priority 5: Have a voice in the decisions that affect their lives

Key priorities

- Support young people to make informed decisions about their lives and relationships
- Involve children and young people in the design, delivery and improvement of our services
- Ensure children and young people have their voice heard in the social care, safeguarding, health and early intervention processes that affect them

Key outcomes

Outcome
Children and young people have influenced the design and delivery of services

Key performance indicators

Indicator
Increased number of children and young people taking part in voice and influence structures like Youth Council
Increased number of children and young people taking part in UnO, Right to Voice and other voice structures for children looked after and care leavers
Number of social care, safeguarding, health and early intervention cases which demonstrate that the voice of the child or young person has been heard.

Strategic Priority 6: Stay in education and get a job

Key priorities

- Increase the number of young people staying on in education and training
- Increase the number of apprenticeships available
- Raise attainment to narrow the gap at age 19 for young people from low income families
- Improve transition to adulthood for young people with special educational needs and disabilities

Key outcomes

Outcome
Increased number of young people aged 19-25 who are in education, employment or training

Key performance indicators

Indicator
Increased number of young people staying on in education
Reduced difference in number of young people staying on in education between students eligible for the Pupil Premium and the general cohort
Reduced number of young people aged 16-18 not in education, employment and training
Reduced inequality gap in number of young people aged 16-18 not in education, employment and training between young people previously eligible for Pupil Premium and those not eligible.
Reduced inequality gap in attainment at age 19 between young people previously eligible for Pupil Premium and those not eligible
Number of apprenticeships starts
Increased number of young people with SEND who are in education, employment or training
Percentage of eligible young people receiving careers information and advice



www.calderdale.gov.uk

For more information about this plan, please contact **Sarah Manfredi**
sarah.manfredi@calderdale.gov.uk
01422 392555