

Consultation on the extension to the early education entitlement



Contents

Page

1	Introduction, Aims and Objectives	1
2	Background	1
3	Methodology	2
4	Key Findings - Parents' Survey	3
5	Key Findings - Providers' Survey	13
6	Conclusions	16
7	Appendices	18
	<ul style="list-style-type: none">● Appendix 1: Map showing the postcodes of partners/parent and toddler groups assisting in the consultation● Appendix 2: Map showing the postcodes of parental respondents● Appendix 3: Map showing the postcodes of provider respondents	

1 Introduction, Aims and Objectives

The Families' Information Service (FIS) carried out research to establish:

- the current barriers to taking up the free early education entitlement
- the demand for flexibility in the delivery of 3 & 4 year old early education and future demand for the flexible offer (from September 2010)
- the preparedness and expected barriers amongst existing accredited early education providers to deliver the increased entitlement (from September 2010).

The results of this consultation will allow the Families' Information Service (FIS) to plan for the extension to the entitlement in September 2010 and establish the levels of support required by providers to prepare for this deadline.

2 Background

Calderdale

Calderdale is an area of many contrasts. The Borough was created in 1974, bringing together the towns of Brighouse, Elland, Halifax, Hebden Bridge, Sowerby Bridge and Todmorden, as well as the surrounding villages of the South Pennine uplands. The distinct identities of these diverse communities remain strong today. In 2004 the internal boundaries were altered to give 17 electoral wards. There are also town councils covering Hebden Bridge/Mytholmroyd (Hebden Royd) and Todmorden and parish councils for Blackshaw, Erringden, Heptonstall, Ripponden and Wadsworth.

Population

Calderdale Council is the sixth largest of the 36 metropolitan authorities in terms of land area, yet the fifth smallest in terms of population. Almost half the residents live in Halifax. The population is 200,100 (2007). The Index of Multiple Deprivation (2004) shows that Calderdale ranks between 65th and 87th out of England's 354 districts on the main indices of deprivation. Calderdale has 13 Lower Super Output Areas classified in the top 10% of the most disadvantaged nationally and 36% have been ranked in the highest 30%.

Early Education Provision

There are currently 119 PVI providers and 38 maintained schools delivering the free early education entitlement in Calderdale, offering parents access to choice and flexibility.

Providers currently offer free early education for 12.5 hours/week for 38 weeks/year to 3 and 4 year olds. The take up of the free entitlement amongst this group is 93%.

The Authority is running a pilot to extend the entitlement from 12.5 to 15 hours/week with 20 PVI providers and 9 maintained schools. All providers will be encouraged to offer 15 hours/week from September 2010.

3 Methodology

In order to involve as many parents as possible in the consultation, the FIS adopted a self completion survey approach. A prize draw of one £50.00 Argos shopping voucher was offered to encourage parents to return the questionnaire.

The consultation with parents took place between 21.9.2009 and 7.11.2009. The parents' survey was distributed by 30 accredited nursery education providers in Calderdale to parents of 3 and 4 year olds currently accessing the entitlement as well as to parents of 1 and 2 year olds who will be amongst the first cohort to access the increased entitlement from September 2010. 14 Children's Centres also offered to distribute the survey on behalf of the FIS.

The FIS Team also visited over 36 parent and toddler groups and Children's Centres across Calderdale to discuss the consultation with parents and to encourage self completion of the survey.

In total 2,000 parents' surveys were distributed and 508 surveys were returned (25%). This comprised mostly responses from parents / carers representing children who are attending (or will be attending) schools with nursery places and private, voluntary and independent providers. Appendix 1 shows the distribution channels for the surveys.

The survey returns were then input and analysed using SPSS (statistical software package).

The consultation with providers not involved in the pilot to extend the entitlement took the form of an emailed self completion survey. The consultation period ran between 8.10.2009 and 6.11.2009. 99 surveys were distributed and 28 were returned. Appendix 3 shows the postcodes of those providers who returned surveys in map format.

A separate consultation with maintained nursery schools not involved in the pilot to extend the entitlement was also carried out with a deadline of 30.11.2009. The results of this survey will be summarised independently to this report.

NB: As these were both self completion surveys the base figures may change from question to question as not all questions have been completed. In addition, a number of questions had the option for a multiple response which can affect the total percentage figure meaning it may not always add up to 100%.

Copies of the surveys used can be obtained, if required, from the Families' Information Service on **01422 253053** or email **fis@calderdale.gov.uk**.



4 Key Findings - Parents' Survey

4.1 Profile Information – Parental survey

In all, 508 surveys were returned giving a response rate of approximately 25%

4.1.1 Parents were consulted across Calderdale and overall a wide coverage was achieved. Respondents were invited to give their postcode and 458 did. Below is a table showing a breakdown of respondents by service area.

Service Area	Number	%
Halifax Central	88	17.3
Halifax North and East	97	19.1
Lower Valley	89	17.5
Upper Valley	184	36.2
Total	458	90.1

These results can also be viewed in a map format in Appendix 2.

4.1.2 Respondents were asked to indicate their ethnic group and 494 did so. The breakdown of responses is below:

Ethnic Group	% of respondents
White (British)	86.0
White (European) / White Other	0.8
White and Black Caribbean	0.0
White and Black African	0.6
White and Asian	0.0
Any other mixed background	0.4
Indian	0.2
Pakistani	7.9
Bangladeshi	0.2
Any other Asian background	0.0
Black Caribbean	0.0
Black African	0.0
Any other Black background	0.0
Chinese	0.0
Other Ethnic Group	2.2
Prefer not to say	1.6

4.1.3 Of those respondents who completed the question on employment status, 315 were employed or self employed (65%).

Employment status	You	Your partner
Employed full time	78	315
Employed part time	195	39
Self employed full time	12	53
Self employed part time	30	7
Training/studying part time	6	2
Training/studying full time	5	2
Not employed, not looking for work	82	6
Not employed - looking for work	26	10
Prefer not to say	5	3
Full time parent	40	3
Total	479	440

4.1.4 Parents were asked to indicate their household income before tax. 483 respondents answered this question.

Income	
£0 - £14,000	87
£15,000 - £20,000	45
£21,000 - £30,000	81
£31,000 - £40,000	57
£41,000+	129
Prefer not to say	84
Total	483

(N.B. Any household with an annual income of less than £20,000 is classed as a 'lower income family', with those earning £20,000 or more classed as a 'higher income family'. These income categories are in line with those used by the DfES Parent's Childcare Survey). 27% of the parents answering this question fell into the 'lower income category'.

4.1.5 Of the 498 parents who answered the question about marital status 435 were married/cohabiting; 57 were single/lone parents; 3 were living as part of an extended family and 3 preferred not to say.

4.1.6 5 parents stated they had additional needs.

4.2 Number and age of children

Parents of children aged 1-4 years were surveyed. The questionnaire sought to establish how many children the parents had aged between 3-4 years (those currently eligible for the early education entitlement) and those aged 1-2 years (who will be eligible for the free entitlement from September 2010).

	No. of respondents	% of respondents
1 year	204	40
2 years	207	41
3 years	199	39
4 years	79	15

4.3 Children with Special / Additional Needs or Disability

As part of the survey respondents were asked whether any of their children had any additional needs and if so, what they were. In total, 0.02% of parents (11 in total) did say they had child(ren) with additional support needs:

- three parents said their children had hearing impairments
- two said their children had allergies
- two said their children had mobility issues
- one said their child had asthma
- one said their child had a visual impairment
- one said their child had epilepsy
- one said their child was a premature baby.



Current use of Nursery Education by parents of 3 and 4 year olds

4.4 Use of Nursery Education

4.4.1 Parents were asked to indicate the type of nursery education provision currently being used for the free sessions for their 3 year olds and 4 year olds, as appropriate. Children may be using more than one type of provision and therefore counted twice. The apparently low number of 4 year olds using nursery education provision is a result of the timing of the survey since the Autumn Term is when the majority of 4 year olds start in Reception.

Type of nursery education provision	3 year olds	4 year olds
Childminder	12	1
Children's Centre	19	1
Private/Independent School	8	4
Nursery class in a school	42	26
Pre-school playgroup	74	10
Private day nursery	81	12
None	17	9
Total	253	63

4.5 Additional requirement for childcare

4.5.1 Parents were asked if they currently used, or planned to use in the next twelve months, any additional childcare for children aged 3-4 years to allow them to work, train or study.

Type of nursery education provision	Currently use	Plan to use
Childminder	15	13
Children's Centre	12	13
Families/carers/friends	62	32
Nanny/Au Pair	1	1
Out of school/holiday care	5	22
Pre-school playgroup	30	33
Private day nursery	28	32
Extended school services	1	18
No additional care required	60	41
Total	214	205



4.6 Barriers to accessing the early education entitlement

4.6.1 Parents were asked if there were any barriers which prevented them accessing the 12.5 hours of free early education.

Barrier	
Not enough places at preferred supplier	25
Not able to claim free sessions through existing provider (eg. unaccredited childminder/informal carer)	8
The sessions are not offered at the right time	22
My preferred option is not flexible enough for the family's needs	16
Not able to access just the free sessions at chosen provider	8
Do not want child to access free early education sessions	4
Other (please see below)	
Total	83

Parents were also invited to give feedback about other barriers to accessing the free entitlement and a selection of their comments are included below:

- “Free” sessions are not free at the private nurseries that provide childcare for working parents (i.e. 7.30 am - 6.00 pm). The nurseries may offer a slightly reduced price. Local pre-schools start and 9.15 and finish at 3.15 pm so aren't good if you work - and you still have to pay for lunchtime
- Free nursery education places not being advertised enough
- Full days are fine but the other 1/2 a session (5th session) is hopeless for fitting round work/other commitments
- I use 10 hrs (2.5 on Mon; 2.5 on Tues and 5 on Weds) because they have to be taken as set sessions - it still leaves me to pay between 7.30 and 9.00 then 11.30 - 1.00 then 3.30 till 5.30. It would be nice if the hours were more flexible.
- Not aware of any free 12.5 hour sessions
- Paying for wraparound lunch can be expensive
- Would prefer to do more am sessions (rather than pm), but places are limited - but have used part allowance on both am and pm sessions.

4.7 Satisfaction with Nursery Education

4.7.1 Parents were asked how satisfied they were with the nursery education received by their child(ren). This question sought to establish overall satisfaction levels and did not concentrate on any one aspect alone (e.g. quality or affordability). 302 parents answered this question. Encouragingly, 98% of those who responded were fairly or very satisfied.

Satisfaction level	
Very satisfied	242
Fairly satisfied	55
Unsure	4
Not very satisfied	0
Very dissatisfied	1
Total	302

4.8 Suggested improvements to nursery education in Calderdale

4.8.1 Parents of 3 and 4 year olds were invited to make comments about suggested improvements to nursery education/childcare in Calderdale and these have been summarised below.

Comment	
Increased flexibility in using the hours	15
Happy with existing provision	12
Increased hours/longer sessions.	11
More support for working parents	6
Sessions should be available when child turns 3 (and not term after third birthday)	6
Increased flexibility within maintained nursery schools	5
Regular updates on child's progress/learning	5
Cost of sessions is a barrier	5
More out of school/holiday care required locally	5
More places to be made available at preferred provider	4
Improved advertising about the free entitlement	4
Sessions to be available in holiday time	4
Increased/improved outdoor play facilities	3
More Pre-schools on school premises	3
More modern provider facilities	3
More support to be made available for pre-schools from Calderdale MBC	2
Concern over paying for lunch/lunchtime cover	2
Reduce the disparity in standards between different providers	2
More weekend childcare	1
More opportunity for parental involvement	1
More spaces to be made available in Sure Start Children's Centres	1
More awareness of cultural/diversity issues by providers	1
More parenting support	1

A selection of comments is included below:

- As most places don't allow you to put more than 2 sessions together (5 hours) this still isn't long enough and therefore the sessions are used at times when you aren't at work. So for a working mum (like me working shifts especially) they are very limiting in usefulness from a financial point of view. I work 15 hours per week but can only use 5 of the hours to help with childcare costs while at work.
- When I return to work I would like all my children to be cared for together which would be hard as they are aged 14 years down to 3 years.
- Am I correct in remembering that in terms of child tax credits you need to work part time for a minimum of 16 hours? If so, why offer funding for only 15 hours - 1 hour short!
- Continuity of care. When allocating primary school places consider the opportunity to allow young children to be able to use the same childminder for before and after school care as they did for the preschool. Childminders can only drop/pick up at one school.
- More staff to allow more specific teaching/observation for individual childcare. Greater opportunity for a wide range of "external" activities, library visits, to the park, nature walks and so on. Greater resources to bring extend people groups into settings e.g. nurseries, puppets, dance etc.

Expected future use of Nursery Education by parents of 1 and 2 year olds

4.9 Future use of Nursery Education

4.9.1 The breakdown of the preferred number of days per week parents would like to be able to use the free entitlement for, by service area, is detailed below.

	Halifax Central	Halifax North & East	Lower Valley	Upper Valley	Total (including respondents not specifying a postcode)
Over 2 days	6	7	9	17	43
Over 3 days	31	29	33	65	179
Over 4 days	1	3	5	13	24
Over 5 days	7	17	17	24	73
Unsure	17	21	6	27	79
Total	62	77	70	146	398

4.9.2 The breakdown of the preferred number of hours per day parents would like to be able to use the free entitlement for, by service area, is detailed below.

	Halifax Central	Halifax North & East	Lower Valley	Upper Valley	Total (including respondents not specifying a postcode)
Up to 3 hours	10	22	8	20	67
3-5 hours	22	17	26	54	140
5-7 hours	17	22	22	44	116
7-9 hours	5	7	8	19	44
More than 9 hours	0	0	2	1	3
Unsure	8	7	6	11	32
Total	62	75	72	149	402

This demand data will be cross referenced against the results of the providers' survey to establish the Local Authority's readiness to deliver a flexible offer in September 2010.



4.9.3 Furthermore, the parents were also asked at what times of day they would expect to find nursery education / childcare for 3-4 year olds most useful to meet their families' needs.

	Halifax Central	Halifax North & East	Lower Valley	Upper Valley	Total (including respondents not specifying a postcode)
Before school	22	22	29	38	119
School hours	56	72	63	136	367
After school hours	20	24	29	43	128
After 6pm till late eve	0	1	1	2	5
Overnight	0	0	0	1	3
Weekends	2	1	0	5	18
Total	100	120	122	225	640

4.10 Additional requirement for childcare

4.10.1 Parents were asked if they anticipated the need for additional childcare (over the free 15 hours per week) when their child turned 3.

	Halifax Central	Halifax North & East	Lower Valley	Upper Valley	Total (including respondents not specifying a postcode)
Up to 5 hours	10	18	17	24	76
6-10 hours	13	11	14	30	78
10-15 hours	15	8	8	14	49
15-20 hours	5	6	6	11	32
More than 21 hours	4	4	6	8	24
No additional requirements	14	29	23	47	126
Total	61	76	75	134	385

4.10.2 Parents were also asked how much they were willing to pay for these additional childcare hours for their children.

Amount	
Can't afford any additional childcare	102
Up to £3.00 per hour	98
Up to £4.00 per hour	80
Up to £5.00 per hour	64
More than £5.00 per hour	22
Total	366

4.11 Barriers to accessing the early education entitlement

Parents and carers were asked whether they could identify any barriers potentially stopping them from accessing the 15 hours free entitlement.

The most common barrier to be cited was a lack of places at a parent's preferred supplier (27%) followed by a lack of information about the early education entitlement (22%). One parent mentioned that a lack of wrap around childcare may prevent take up of the free early education entitlement.

	Halifax Central	Halifax North & East	Lower Valley	Upper Valley	Total (including respondents not specifying a postcode)
Not enough places at preferred supplier	13	9	10	22	58
Not able to claim free entitlement through existing provider	3	4	3	7	18
The sessions are not offered at the right time	6	6	7	7	40
Preferred option not flexible enough to meet my needs	7	4	1	16	28
I am not able to access just the free sessions at my chosen provider	1	3	6	2	10
I won't want my child to access the free early education sessions	7	17	9	14	11
Lack of information about free early education sessions	0	1	1	4	49

The pressure on early education places in Central Halifax is already documented on the Families' Information Service database but the apparent lack of places at preferred providers in the Upper Valley will require further exploration. Parents who completed a questionnaire whilst attending a Parent and Toddler Group as part of the consultation process also received a leaflet promoting the early education entitlement, which will go some way towards alleviating the issue of 49 parents reporting a lack of information. Early education leaflets are also regularly supplied to health visitors who distribute on behalf of the FIS.

4.12 Suggested improvements to nursery education in Calderdale

Parents of 1 and 2 year olds were invited to make comments about suggested improvements to nursery education/childcare in Calderdale and these have been summarised below.

Comment	
More information on the free entitlement	15
More flexibility around using the 15 hours	15
Increased hours/longer sessions.	7
Cost of sessions is a barrier	6
More choice/places	5
More support for working parents/families where two parents work	5
More places in maintained school nurseries	4
Lunchtime costs can be a barrier	4
More out of school/holiday care required locally	3
Higher adult to child ratios/more keyworkers to be available	3
Help to support child's learning at home/improved feedback to parents about child's progress	2
Extension of free places to 2 year olds	2
Increased/improved facilities/equipment/outdoor play facilities	2
Improved parenting advice (beyond the age of 5)	2
More flexibility in maintained school nurseries	2
More weekend childcare	1
Access to some of the older buildings can be a barrier	1
Better qualified staff in early years settings	1
More information on how to apply for a full time school place	1
Healthier food to be served in early years settings	1

A selection of comments is included below:

- Simpler toys which encourage children to use their imagination. More outdoor care and wooden toys or toys made out of natural materials. Stronger links to nature and the seasons.
- A wider variety of types of nursery education including more informal education e.g. Steiner. Small classes in state provided schools. I did try one but it had 30 children in one small class area – too crowded for my child and I would query the level of supervision/education.
- More information on combining sessions between school and a private nursery/pre-school.
- School nurseries could provide longer cover during the day (i.e. full hours between 9.00am and 3.30pm) so that children can be integrated into the school environment more easily and at an earlier age. My child won't go to school until they are nearly 5 years old and the school nursery hours of 2.5 hours per day do not cover my childcare needs.

5 Key Findings - Providers' Survey

All accredited early education providers not currently involved in the pilot were invited to take part in a consultation to establish their readiness for the extension in September 2010. 99 surveys were sent out and 28 were received back.

5.1 Providers were asked if they currently allow parents to join together two sessions of early education (e.g. 8.00am – 1.00pm). 82% confirmed that they do allow this to happen in their setting.

5.2 Providers were asked if they had undertaken any consultation to establish how parents might prefer to use the extended entitlement and to describe their findings. A summary of their comments is included below:

- As a result we now offer lunches as an addition to our sessional care so parents can leave their children at 9.00am and pick them up at 3.00pm, with only the additional cost of lunch cover.
- Most parents would like extra hours at the beginning or end of the current sessions.
- We asked parents to record if they wanted to remain with 2.5 hour sessions or if they would prefer 3 hour sessions. 87.5% said they were happy with the 2.5 hour sessions and 12.5% said they would prefer to have 3 hour sessions.
- The majority of our parents choose full daycare.
- We are open from 7.30am – 6.00pm daily for 46 weeks a year. Parents are very positive and happy that we can accommodate (the entitlement) for their children.
- We allow maximum flexibility for parents to access the funding to suit their individual needs, so no consultation has been undertaken as it was not needed.
- We already offer 3 hours per session.
- Through informal chats with parents we have some who would like to be able to take 2 or 3 sessions together.

5.3 Providers were asked what they need to do at their setting to be ready to deliver the extended offer by September 2010. Almost half said they were already prepared to deliver the extended offer now. Four providers said they would need to look closely at staff hours and contracts. Four said they would need to re-configure the hours they offered in a day to fit in the additional sessions. One provider identified constraints around the building they operate from. One provider identified the need for additional training on delivering extended hours. One provider mentioned they were planning to work with the school who would be offering a three term intake from April 2010.

5.4 Providers were asked what support they were likely to need from the Family Services Team in order to be ready to deliver the extended offer by September 2010.

Support required	
Information to parents about the flexible entitlement	20
Training for Early Years practitioners	11
Linking the delivery of the flexible entitlement with an annual assessment of parents' needs	10
Advice and support on (re)negotiating contracts for staff/premises	4
Advice on staff to child ratios	3

Providers will be referred to the appropriate team for the required support.

5.5 Pilot providers are working to a delivery framework of between 2.5 hours and 6 hours per day. Providers were asked how they envisaged delivering the flexible entitlement.

Delivery of the flexible entitlement	
5 x 3 hours (am)	18
5 x 3 hours (pm)	18
6 x 2.5 hours	16
2 x 6 hours plus 1 x 3 hour over 3 days	13
Shorter hours over longer than 38 weeks per year	0

Providers also commented as below:

- We would not wish to provide 2 x 6 hours as the provision of meal/snack times would detract from the educational delivery.
- 4 hours (am)
- Fewer hours per day continued through the holidays
- Any to meet parents' needs – childminders are very flexible
- 6 hours a day is totally unacceptable. DCSF guidance clearly states up to 10 hours a day in any one day because flexibility should support parents. Also those wanting 2 days can only have 12 of 15 hours.
(NOTE: The draft Code of Practice on the Provision of the Free Early Education Entitlement for 3 and 4 year olds states “the national limits are the limits that local authorities should not deliver the free entitlement outside of. The limits are not what local authorities should make available to parents. There is no national expectation that local authorities will expect providers to offer the sessions at the outer limits as a matter of course”).
- We already offer flexibility of four different 5 hour sessions so we hope to continue with these. We offer 8.00am - 1.00pm, 1.00pm - 6.00pm, 11.30am - 4.30pm and 9.00am - 2.00pm.

5.6 Providers were asked what they envisaged the main challenges were in delivering the extended entitlement.

Support required	
Parental expectations of flexibility	13
Additional staff cover/costs	12
Lunch cover/costs	10
Administration of a more flexible NEF entitlement	9
Additional resources required (e.g. kitchen equipment)	8
Not being able to fill the flexible places	6
Additional premises costs	5
Building constraints (e.g. leases, shared community venue etc)	3

Other comments included:

- We have no outdoor play area. At the moment we manage with short outdoor visits to the park etc but if we opened longer days/sessions the children would need indoor/outdoor access/play etc.
- Our main challenge is that as a committee run provision, we need to have the information, skills and understanding of any rules that we need to follow before we make changes. We need financial planning support and staff contract support if major changes are to be made.
- Will providers be able to charge for lunch/tea?
- Difficult to say until we receive more information. Unclear of what we can or cannot do. (NOTE: The draft Code of Practice on the Provision of the Free Early Education Entitlement for 3 and 4 year olds states “ a final version of the Code will be published early in 2010 and, alongside new regulations, will apply to all local authorities from September 2010.” Calderdale MBC aims to have a new local Code of Practice in place by September 2010.)

5.7 Providers were asked if they anticipated any other issues in delivering a flexible entitlement and a summary of the comments is included below:

- With our sessions lasting up to 4 hours we already incur considerable costs with regard to staff, rents, provision of meals. We have supplemented the 2.5 hours' NEF with parental fees but we should be able to cover our costs more easily when the new entitlement occurs.
- It may have a knock on effect on sustainability as offering extra funded places may affect the sessions available to 2.5 year olds.
- The church hall isn't suitable anymore. Now, it's not a 'little playgroup' but a larger pre-school and we have outgrown our building.
- Need some knowledge on how schools and Children's Centres are working together on this.
- I feel that the funding received for the 15 hours against the costs of the nursery sessions would mean that nurseries as a whole would be working at a loss which is the case at present.
- How do we ensure the take up of places? We do have spare places.



6 Conclusions

Respondents

Overall, a good mix of surveys were completed and returned by a range of parents across Calderdale, representative of different economic backgrounds, employment and marital status which also included parents accessing different nursery education providers. In addition, parents were surveyed across the four service areas although there was an over-representation of parents from the Upper Valley area. On the whole though, the responses did not vary significantly by service area.

Satisfaction with free entitlement

Many parents are happy with the nursery education provided for their children in Calderdale, though it is also evident there are a number of improvements that can be made. Issues raised generally related to the flexibility of free entitlement particularly in terms of helping working parents, but also issues around cost were raised in relation to the additional care that is required.

Preferred usage of free entitlement

The Department for Children, Schools and Families (DCSF) is currently consulting on a new national framework for the delivery of the entitlement from September 2010 and proposing a number of different delivery models:

- 3 hours a day over 5 days of the week
- 5 hours a day over 3 days of the week
- 6 hours + 6 hours + 3 hours over 3 days of the week
- 9 hours + 3 hours + 3 hours over 3 days of the week.

However it is up to local authorities to consider delivery of the model(s) most suited to their local communities and to assess parental demand for these.

The survey results indicate parents' needs do differ in terms of the preferred use of the free entitlement. The most popular responses suggest a requirement for the entitlement over 3 days with the ability to use 3-5 hours per day (35%) or 5-7 hours per day (29%).

Additional requirement for childcare

There appeared to be an additional childcare requirement for some parents to allow them to work, train or study. The number of additional hours required by parents varied, with 34% anticipating no additional need for childcare other than the free entitlement week but 40% thought they might need between 1 and 10 additional hours and 20% thought they might need between 11 and 20 additional hours.

The additional amount of money parents were willing to pay for childcare also differed. 27% said they couldn't afford to pay anything. However, just over 66% are willing to pay up to £5.00 per hour, with 6% of parents willing to pay over £5.00 per hour.

Sufficiency of Nursery Education provision

With regards to the Local Authority's sufficiency duty and the nine childcare sufficiency indicators (number of places overall, flexibility, sustainability, quality, affordability, inclusive, accessibility, range and the provision of information to parents), the Families' Information Service can be reasonably confident we will have in place a market ready to deliver a flexible extended offer to parents by September 2010. Our aim is to ensure early years provision is flexible, sustainable and responsive to the needs of the community it serves and to support parents in making real choices which positively impact on the way they balance their individual and family commitments.

For more information on the support available to providers delivering the free entitlement please contact the following:

Business Planning Officer (Family Support)
Tel: 01422 392719

Childcare and Quality Development Team
Tel: 01422 252309

Early Years Learning Consultants Team
Tel: 01422 394109

Families' Information Service
Tel: 01422 253053

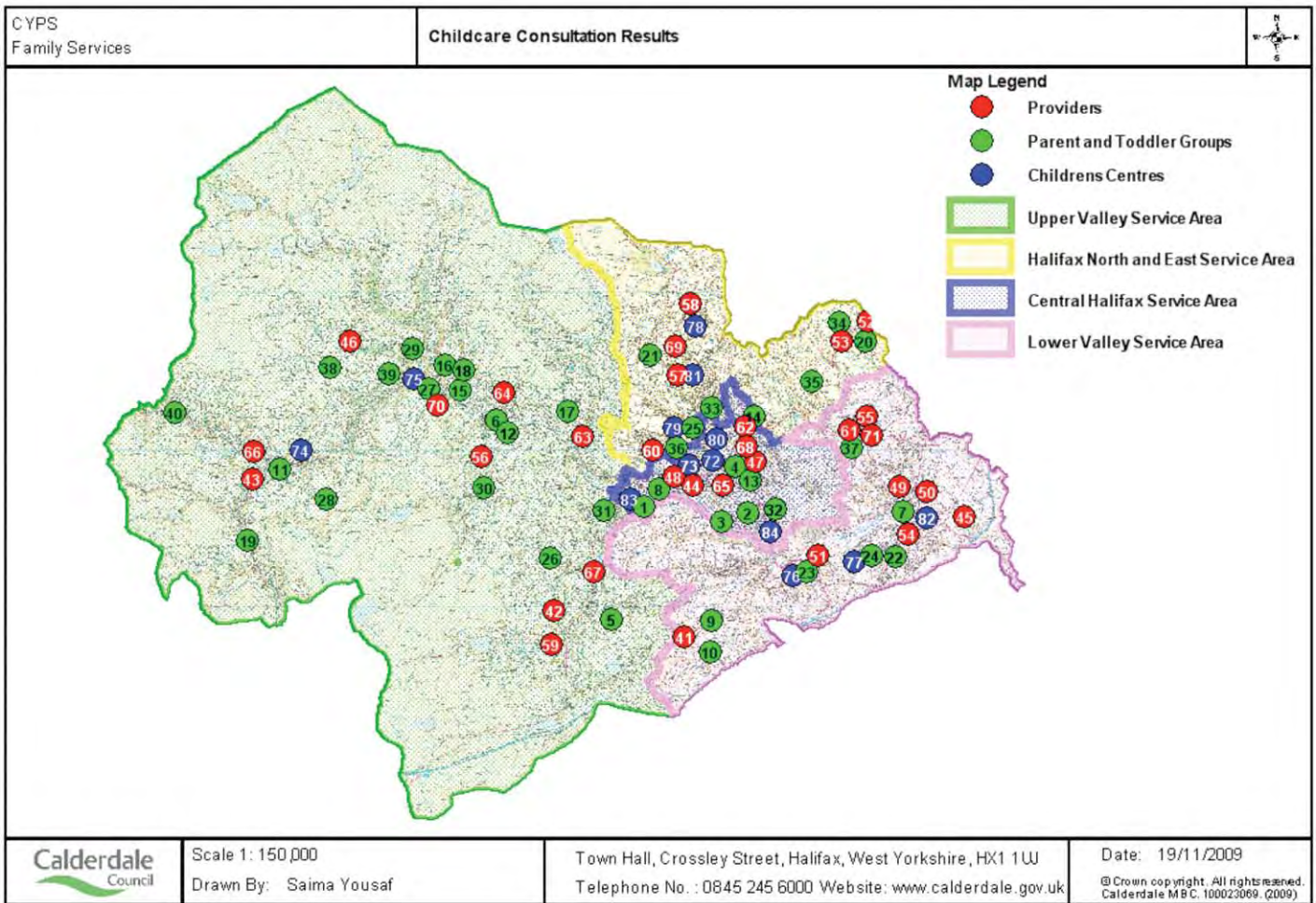
Workforce Development Manager
Tel: 01422 392691

For further copies of this report please contact the Families' Information Service on **01422 253053** or email **fis@calderdale.gov.uk**.



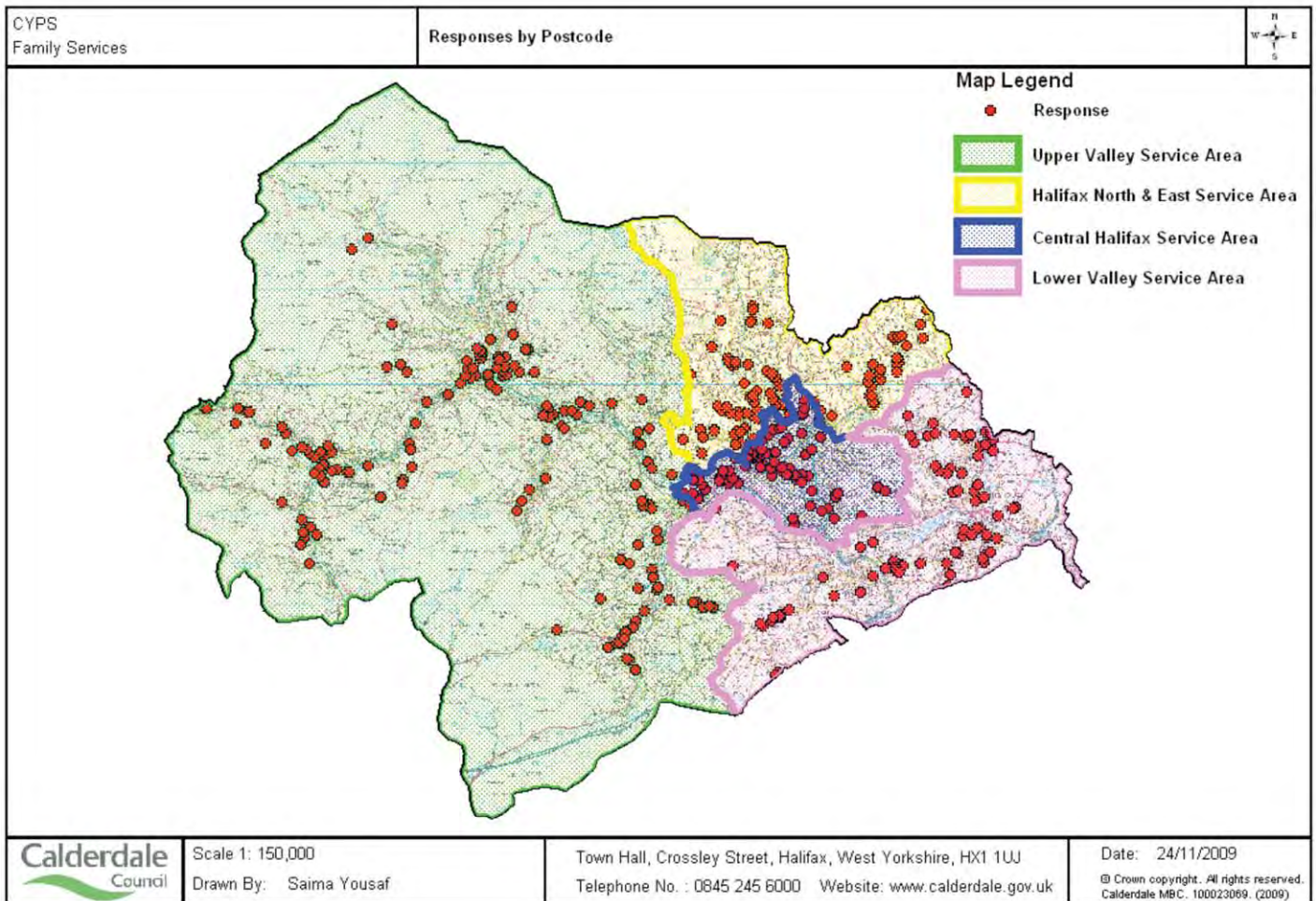
7 Appendices

Appendix 1: Map showing the postcodes of partners/parent and toddler groups assisting in the consultation



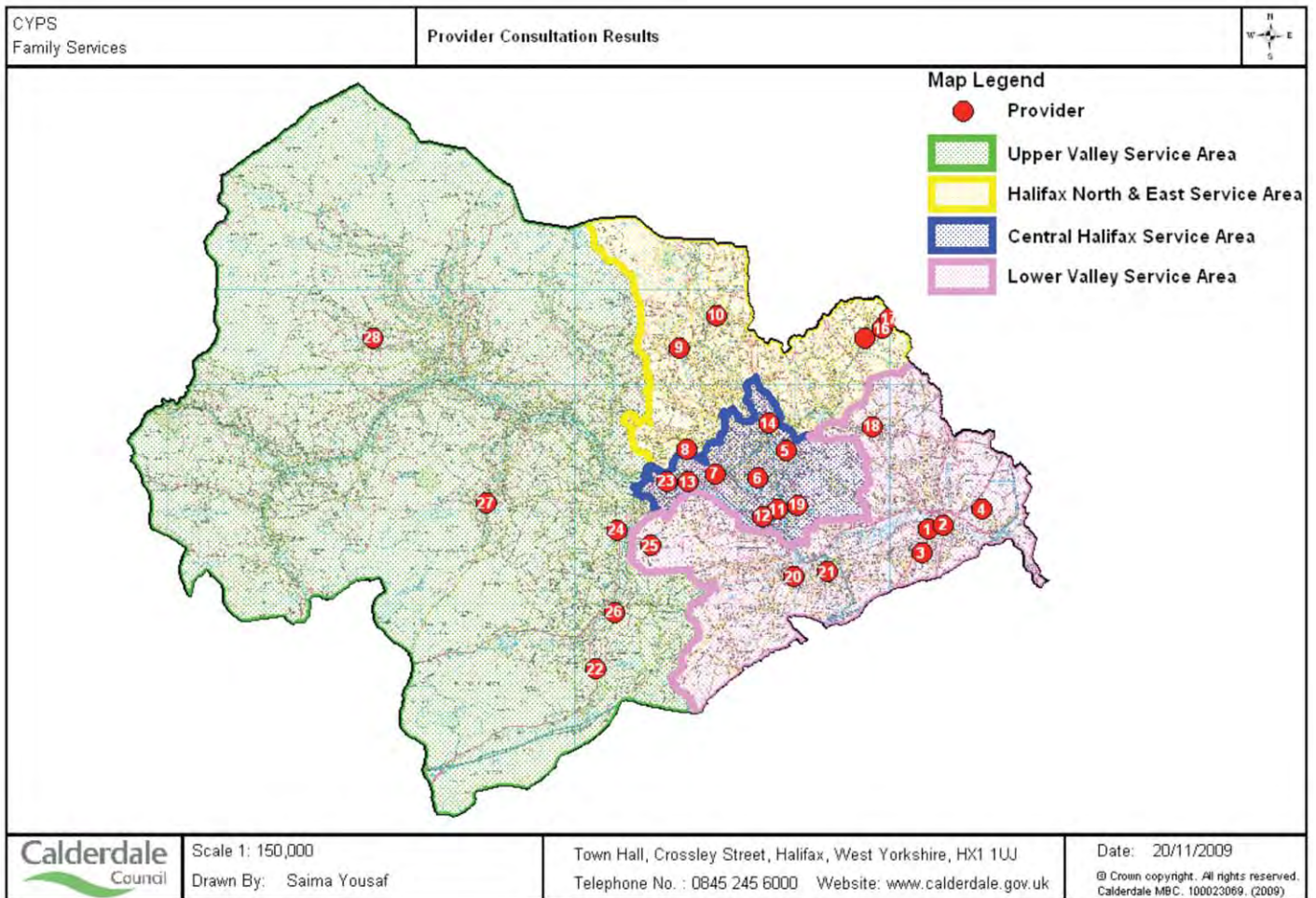
To request an additional copy of this map please contact Saima Yousaf on 01422 392591.

Appendix 2: Map showing the postcodes of parental respondents



To request an additional copy of this map please contact Saima Yousaf on 01422 392591.

Appendix 3: Map showing the postcodes of provider respondents



To request an additional copy of this map please contact Saima Yousaf on 01422 392591.



