



Wellholme Park Children's Centre Newsletter

Bradford Road, Brighouse HD6 4AF Tel: 01484 714768 Fax: 01484 712349
Email: vicky.stocks@calderdale.gov.uk, gail.crabtree@calderdale.gov.uk or
emma.grant@calderdale.gov.uk

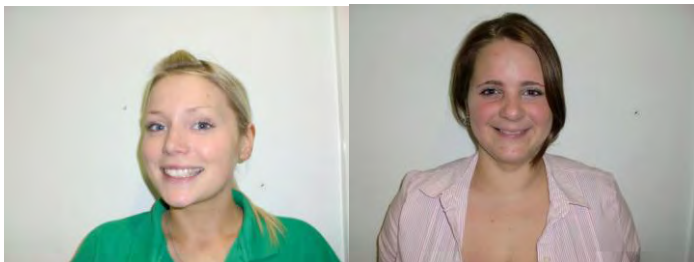
September/October 2011



Welcome to the September/October issue of our newsletter - we have lots of fun activities going on in and around Brighouse along with a few new members of staff.
More information is included in this newsletter!

We say 'congratulations and welcome' to Emily Smith and Emma Grant who are our Parent Link Workers for the Lower Valley. Emma will be in post from Monday 3rd October 2011. If you require information on any of the following, please do not hesitate to speak to either Emma or Emily:

- Accessing specialist services, such as Speech and Language Therapists.
- Family Health Services.
- Support and advice on benefits, work and training.
- Information on local childminders, childcare providers, groups for families and local schools.
- Plus much more!



Emma Grant

Emily Smith

First Aid course
We have a First Aid course running at the Centre on Saturday 12th November 2011 from 9.00am till 1.00pm. The course deals with serious conditions and incidents – ideal if you want to know what to do in an emergency involving a casualty of any age!
Please call 01484 714768 to book a place. A cost of £5.00 applies.

Parenting Programmes
We are running Parenting Programmes at Whinney Hill Community Centre because kids don't come with an instruction manual! Please call Emily on 01484 714768 for more information.

Children's Centre Groups and Activities

Day	Activity	Time	Further information
Monday	Childminder Group	9.30am to 11.30am	Weekly meeting for local childminders and their children with monthly support from a Childcare Quality and Development Officer. (Term time only). No need to book, just drop in!
Monday	Young Parents' Group	1.30pm to 3.00pm	Come along to our session at Whinney Hill Community Centre; meet other parents and share experiences and ideas. A group for parents up to the age of 25 years. Please call the Centre to book your free place!
Monday	Job Centre Plus drop in	1pm to 4pm	Looking for a job? Want to know more about training courses? If so then Nigel, our Job Centre Plus Adviser, is your man! Nigel can offer help on looking and applying for jobs and finding the right course for you. Please call 01484 714768 to make an appointment.
Tuesday	Baby Group	1.00pm to 3.00pm	A group for parents with babies aged 0-12 months. Come along and meet other parents for a drink and a chat. Get advice, parenting tips, weaning advice and more! Please call the Centre on 01484 714768 , e-mail emma.grant@calderdale.gov.uk or visit the Centre to book a place.
Tuesday	Library Bus	10.15am to 10.45am 4.15pm to 4.45pm	10.15am – 10.45am, every alternate Tuesday. Open to everyone to promote early reading and writing skills. No need to book, just call in! 4.15pm – 4.45pm the Library bus will be at the shops in Whinney Hill Park!
Tuesday	Antenatal Clinic	9.30am to 4.00pm	All day antenatal clinic with midwife. Appointments only.
Tuesday	Volunteer Action Group	3.00pm to 5.00pm	Interested in Volunteer Work? Please call the Centre on 01484 714768 to make an appointment and get advice on voluntary work.
Wednesday	Antenatal Clinic	9.30am to 4.00pm	All day antenatal clinic with midwife. Appointments only.
Wednesday	Breast Feeding Group	1.00pm to 2.30pm	An opportunity to ask questions and get advice and support on breastfeeding your baby or just socialise with other breastfeeding mums. No need to book, just drop in!
Wednesday	CDU Multi Support Group	10.00am to 12.15pm	A support group for children and parents/carer who attend CDU.
Wednesday	Family Fun Time	1.30pm to 3.00pm	Enjoy Messy activities with your children 0 - 4 yrs at Whinney Hill Community Centre! Healthy snacks and refreshments also provided. Contact Sharon for more info on 01484 714768 or just turn up on the day!
Wednesday	Baby Massage	10.30am to 11.30am	Enjoy baby massage at Whinney Hill Community Centre, please contact Sue on 01484 386621 to book a place.
Thursday	Antenatal Clinic	9:00am to 1:00pm	Morning antenatal clinic for 1 st appointments only.
Thursday	Family Support Drop in	1.00pm to 3.00pm	Family Support Drop In at Lawson Road Health Centre. Just drop in with any questions, worries or concerns you may have about your family.

What's Happening In Nursery

Staffing

Congratulations to Michelle Fee, who has now become Senior Early Years Practitioner in the 2-3 and 3-5 rooms. Alex Pickles will now take on role of Early Years Practitioner. We welcome Tahira Ali to our team who will be working 25 hours/week as Early Years Practitioner in the baby room.



Tahira Ali

Get well soon to Natalie Burke who is currently on long term sick. Sadie Ellis will be moving to room 1 to cover Natalie's absence.

Recipe Books

Look out for our new winter menus in the corridor at the Children's Centre. We have also produced recipe book of nutritious meals to make at home for you and your family!

Parents/carers notice

- Please bring new toothbrushes to replace the old ones at Nursery.
- Please bring appropriate clothing for the weather, i.e. waterproof coat, wellington boots, and please make sure that all nursery clothing is clearly labelled with your child's name.
- Please donate any spare clothing to Nursery i.e. underwear, trousers, tops for children etc.
- Please remember to bring enough nappies and wipes for your child.

What's happening in Nursery

Room 1 - autumn, textures and sounds

Room 2 – autumn, patterns and sounds

Room 3 – autumn, light and dark, see and hear

Can room 3 parents/carers please bring tubes (preferably kitchen rolls, not toilet rolls) so we can make kaleidoscopes for our light and dark, see and hear theme?



DATES TO REMEMBER

Nursery is closed all day for essential staff training on:
Thursday 10th November 2011

Nursery is closed to 3 year funders: **Monday 24th October 2011** and re opens **Monday 31st October 2011**.

HOLIDAYS

The nursery will close at 4.50 pm for staff meetings and training on:

Wednesday 5th October 2011

Wednesday 2nd November 2011

COMPLIMENTS & COMPLAINTS

If you are happy or dissatisfied with the service that we provide, please speak to Vicky Stocks or Gail Crabtree, Deputy Children's Centre Managers direct at the following address:-
Wellholme Park Children's Centre, Bradford Road, Brighouse HD6 4AF
Or call 01484 714768