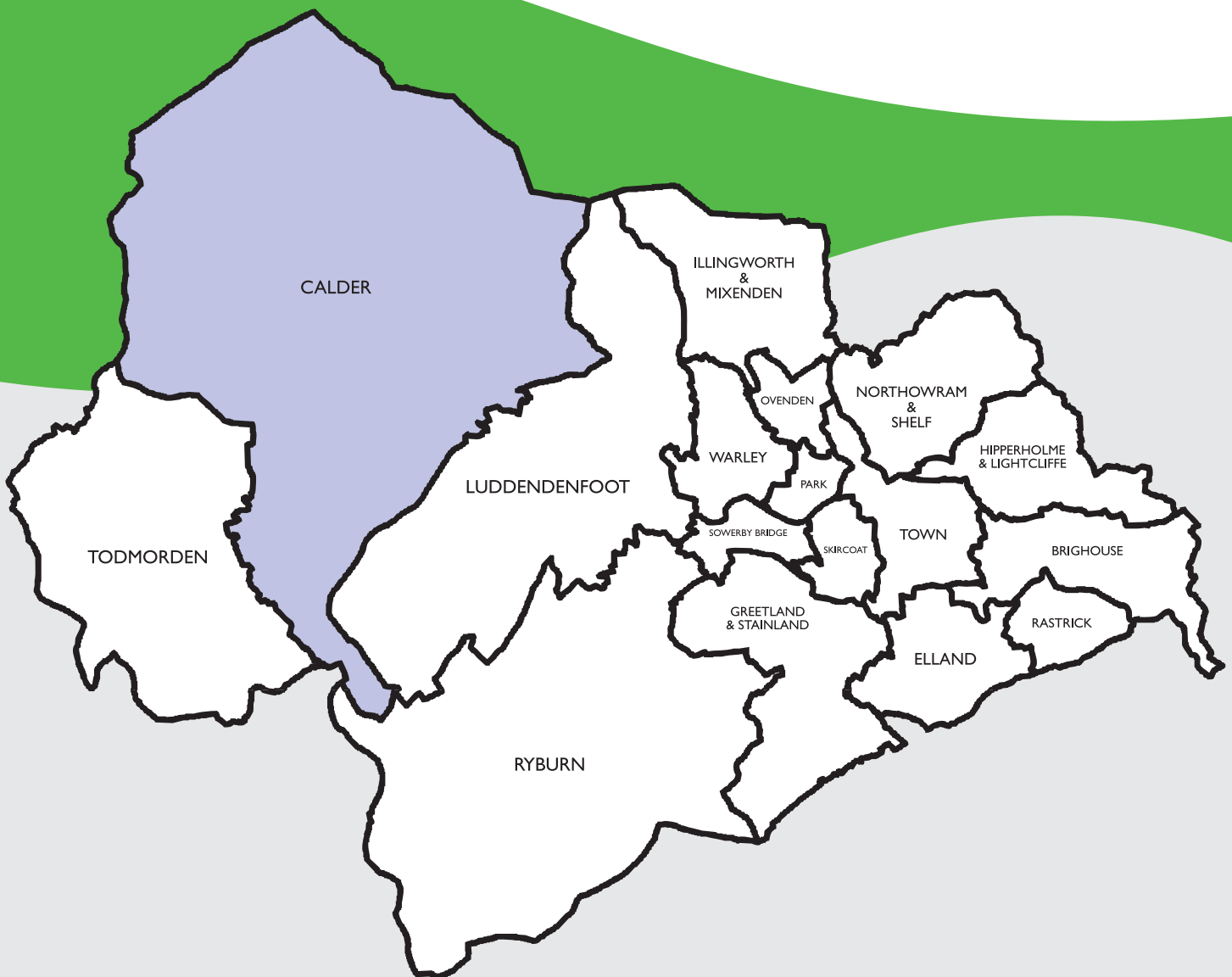
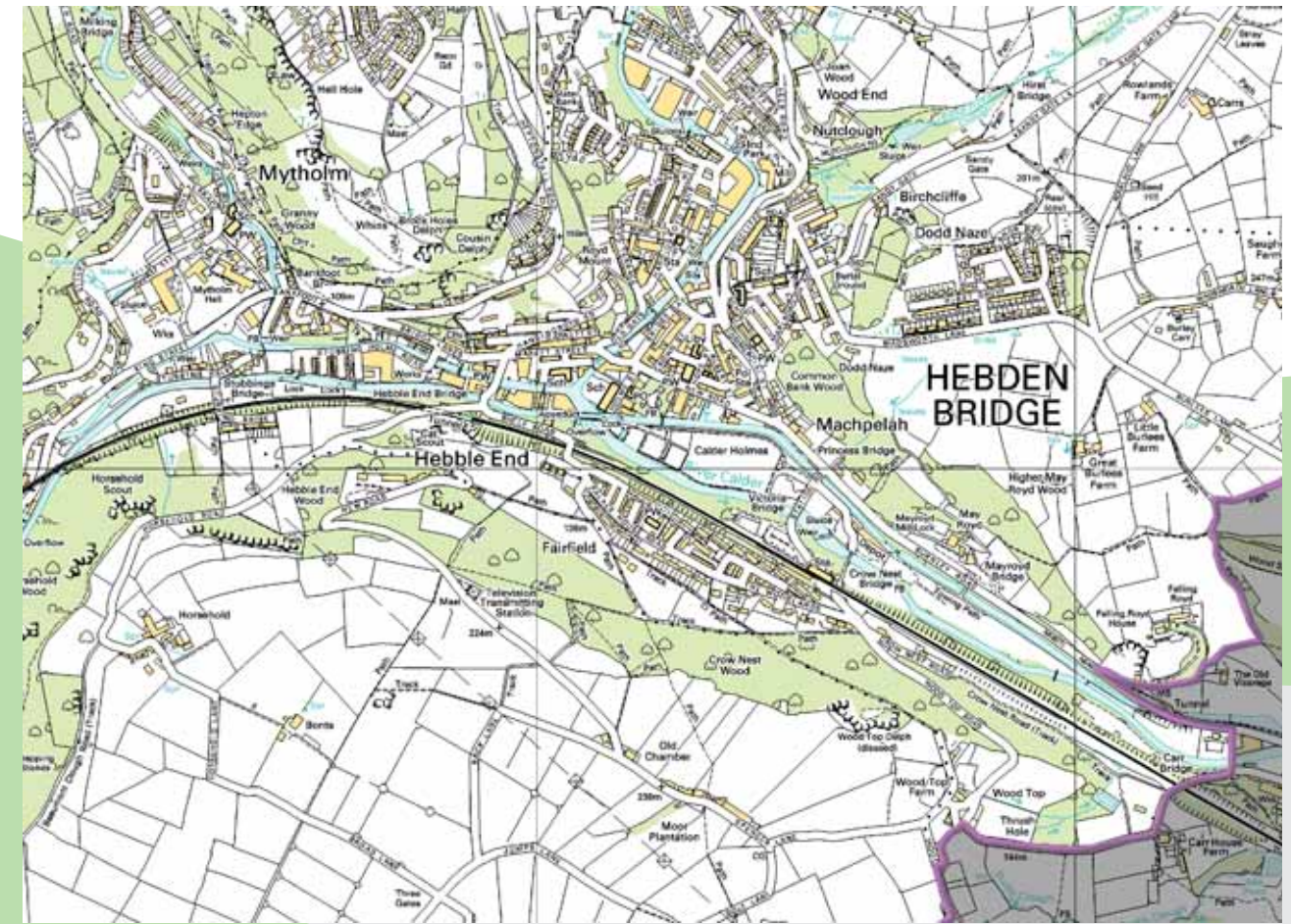
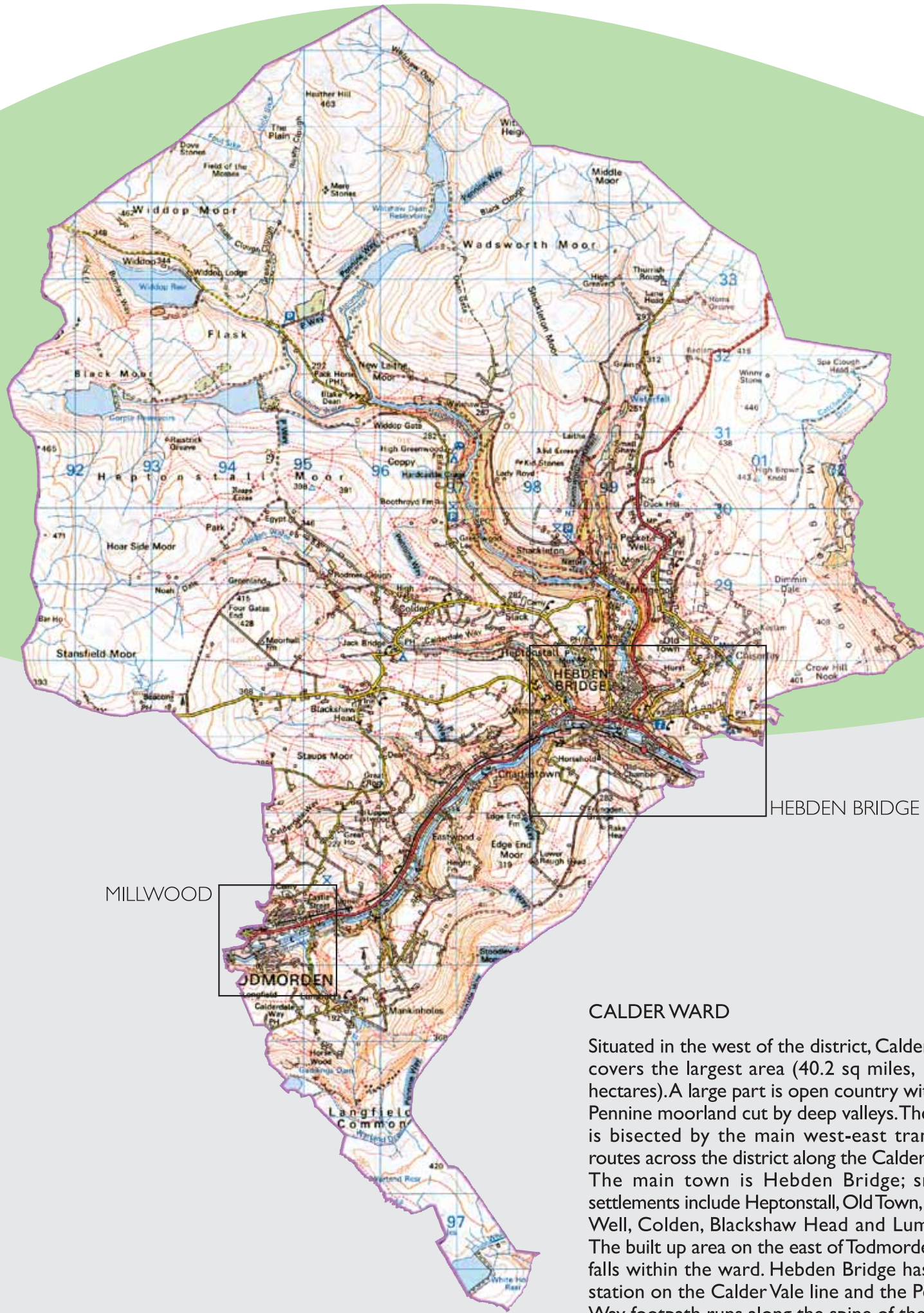


CALDER
ward profile

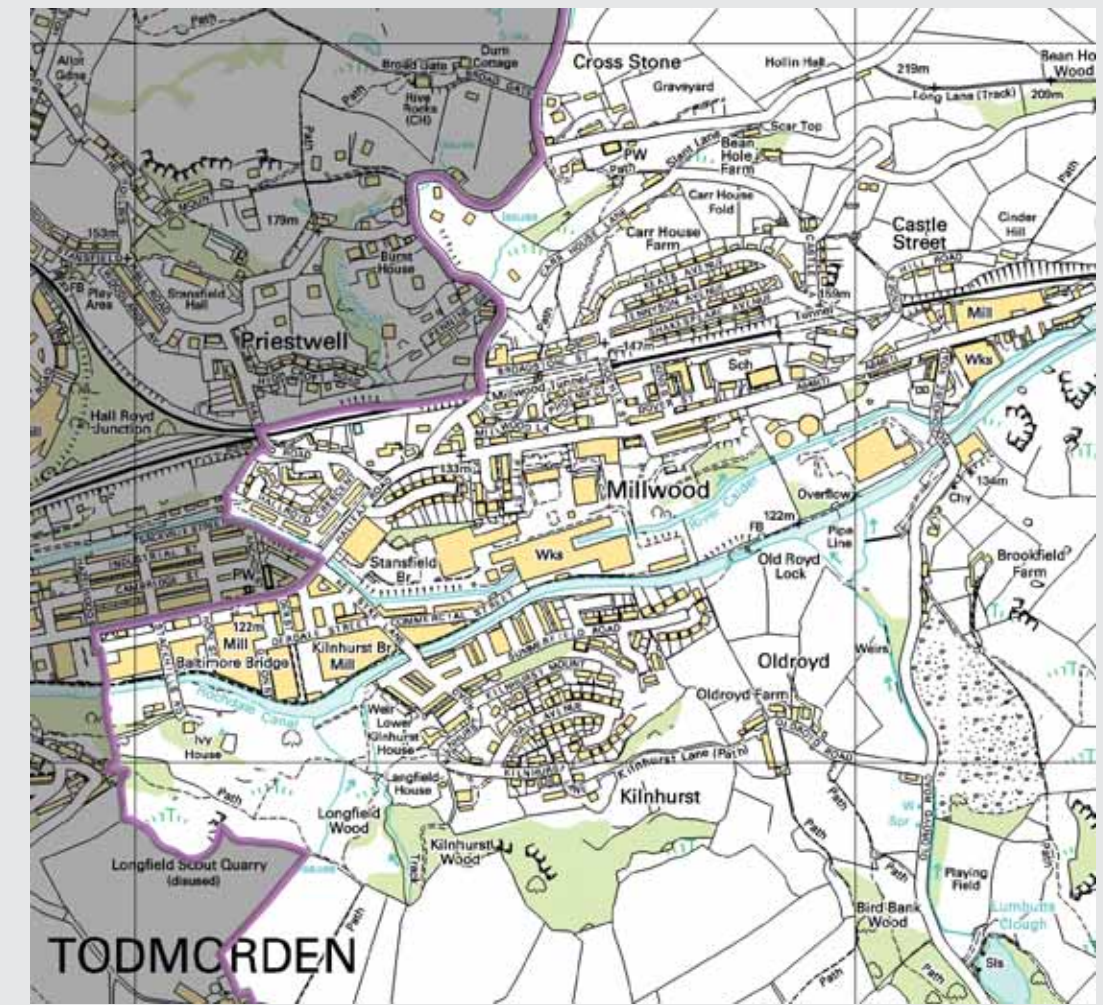




HEBDEN BRIDGE

HEBDEN BRIDGE

MILLWOOD



MILLWOOD

TODMORDEN

CALDER WARD

Situated in the west of the district, Calder ward covers the largest area (40.2 sq miles, 10,423 hectares). A large part is open country with high Pennine moorland cut by deep valleys. The ward is bisected by the main west-east transport routes across the district along the Calder valley. The main town is Hebden Bridge; smaller settlements include Heptonstall, Old Town, Pecket Well, Colden, Blackshaw Head and Lumbutts. The built up area on the east of Todmorden also falls within the ward. Hebden Bridge has a rail station on the Calder Vale line and the Pennine Way footpath runs along the spine of the ward.

AREA AND POPULATION

AREA: 10,423 sq hectares 40.2 sq miles

Total Population: 11,549

Males 48.2% Females: 51.8%

Population density: 1.1 persons per hectare

Number of Electors: 8,647 (December 2003)

POPULATION STRUCTURE

Total Population

Age group	Nos	% in ward	% district
0-4	619	5.4	6.3
5-15	1,650	14.3	15.0
16-24	983	8.5	9.4
25-44	3,462	30.0	29.0
45-59	2,711	23.5	19.9
60-74	1,363	11.8	12.8
75+	774	6.7	7.6

ETHNICITY

Total Population

Ethnic group	Nos	% in ward	% district
White	11,312	97.9	93.0
Asian	113	1.0	5.7
Black	12	0.1	0.2
Mixed	91	0.8	0.8
Chinese/Other	24	0.2	0.3

ECONOMIC ACTIVITY

Residents aged 16-74

	Nos	% in ward	% district
Economically - active	5,981	70.2	68.5
Unemployed	286	4.8*	5.5*
No Qualifications	1,972	23.2	31.2

* % of economically-active residents aged 16-74

SOCIAL GROUPS

Residents aged 16+

Group	Nos	% in ward	% district
A/B	2,537	27.4	20.3
C1	2,761	29.8	28.1
C2	1,392	15.0	16.3
D	1,237	13.4	18.9
E	1,326	14.3	16.4

QUALITY OF HEALTH

Total Population

	Nos	% in ward	% district
People with a long-term illness	2,097	18.2	18.4
Health not good	1,116	9.7	9.8

HOUSEHOLDS

Total Households: 5,053

Average Household Size: 2.3 persons

HOUSEHOLD COMPOSITION

Total Households

Type	Nos	% in ward	% district
2+ adults and dependent child(ren)	1,178	23.3	24.1
Lone parents and dependent child(ren)	332	6.6	6.6
2+, All pensioners	411	8.1	8.8
One pensioner	644	12.7	15.0
Other 1-person	900	17.8	15.5
Others	1,572	31.1	30.1

TENURE

Total Households

Type	Nos	% in ward	% district
Owner Occupied	3,760	74.4	71.5
Social housing	569	11.3	16.9
Private rented/other	711	14.1	11.6

HOUSEHOLD AMENITIES

Total Households

	Nos	% in ward	% district
Overcrowded	312	6.2	7.0
No central heating	905	17.9	19.3
No car	1,376	27.2	31.0
2+ cars	1,424	28.2	25.3

HOUSEHOLD INCOMES

Estimate of Households in 2003

Income (£)	Nos	% in ward	% district
0 - 5,000	262	5.0	5.5
5 - 10,000	576	10.9	12.3
10 - 15,000	733	13.9	15.1
15 - 20,000	719	13.6	14.3
20 - 30,000	1,137	21.5	21.5
30 - 40,000	720	13.6	12.9
over 40,000	1,132	21.4	18.4

Source: CACI Ltd 2003

BENEFITS

Total Occupied Dwellings in 2003

Type	Nos	% in ward	% district
Council tax	723	14.5	19.6
Housing Benefit	524	40.9*	51.6*
Free school meals	88	1.8	3.3

* % of rented dwellings

Source: Calderdale Council 2003